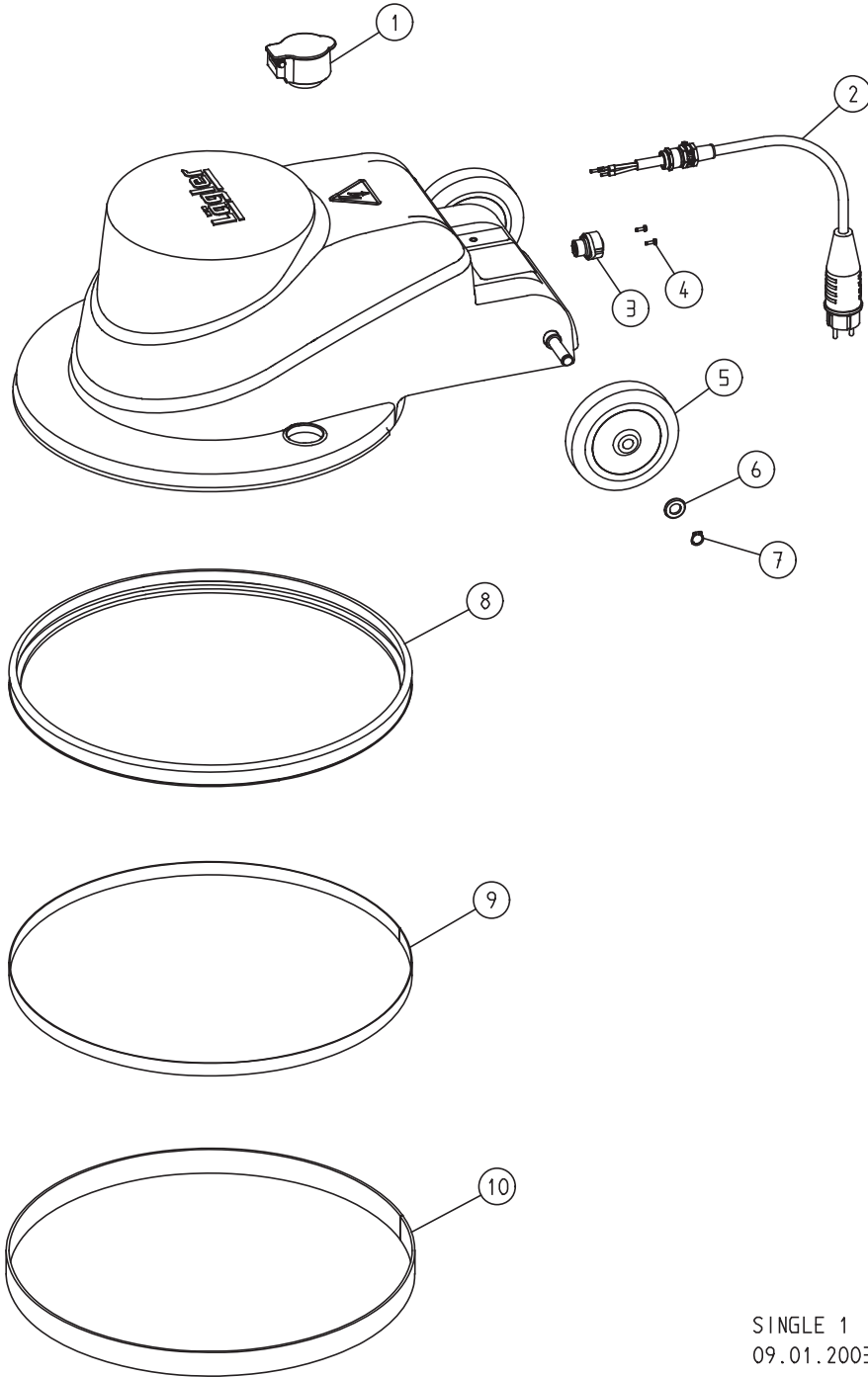


SPARE PARTS

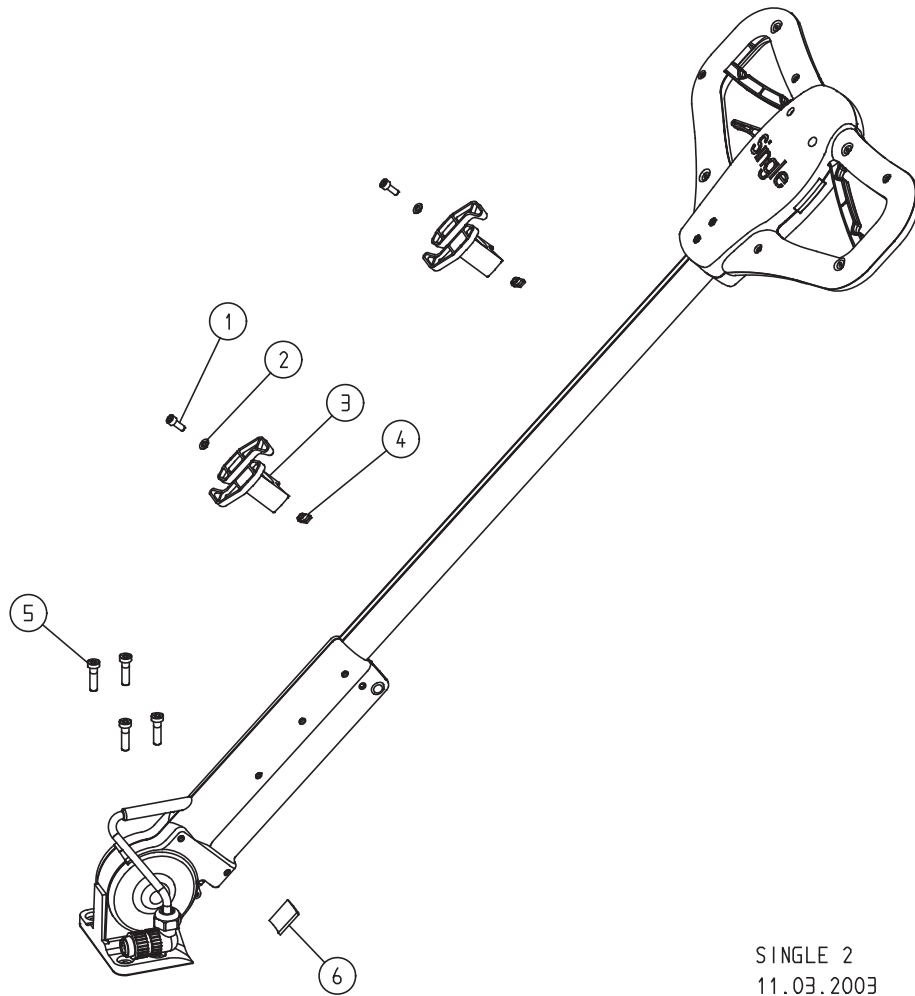


SINGLE 1  
09.01.2003

## SPARE PARTS

Item	Part number	Description
1	850.01.80.200	Dust extraction socket
2	000.65.43.252	Motor cable 3 x 2.5 mm <sup>2</sup>
3	000.65.71.040	Integrated socket
4	7500.1003.010	Screw
5	850.05.09.105	Wheel
6	0125.1012.000	Washer
7	0471.0012.000	Circlip
8	850.01.02.105	Buffer
9	850.01.40.100	Velcro
10	850.01.51.100	Fluffy sealing strip

SPARE PARTS

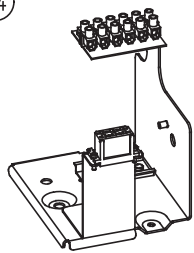
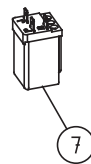
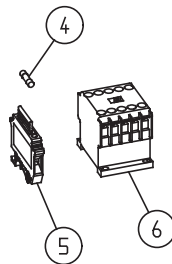
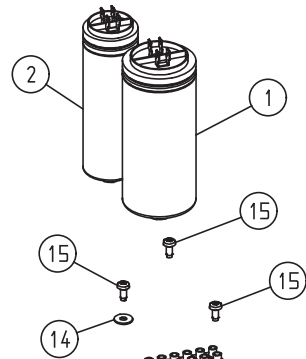
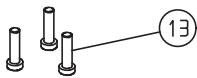
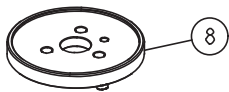
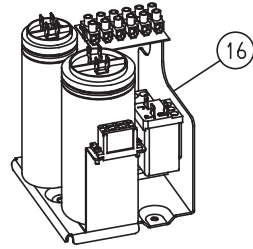
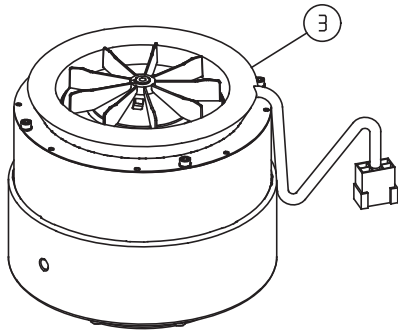


SINGLE 2  
11.03.2003

## SPARE PARTS

Item	Part number	Description
1	0912.1006.016	Screw
2	0125.1006.000	Washer
3	850.20.28.105	Cable holder
4	850.20.29.100	Sliding block
5	7984.1008.030	Screw
6	900.70.25.105	Bumper felt

SPARE PARTS

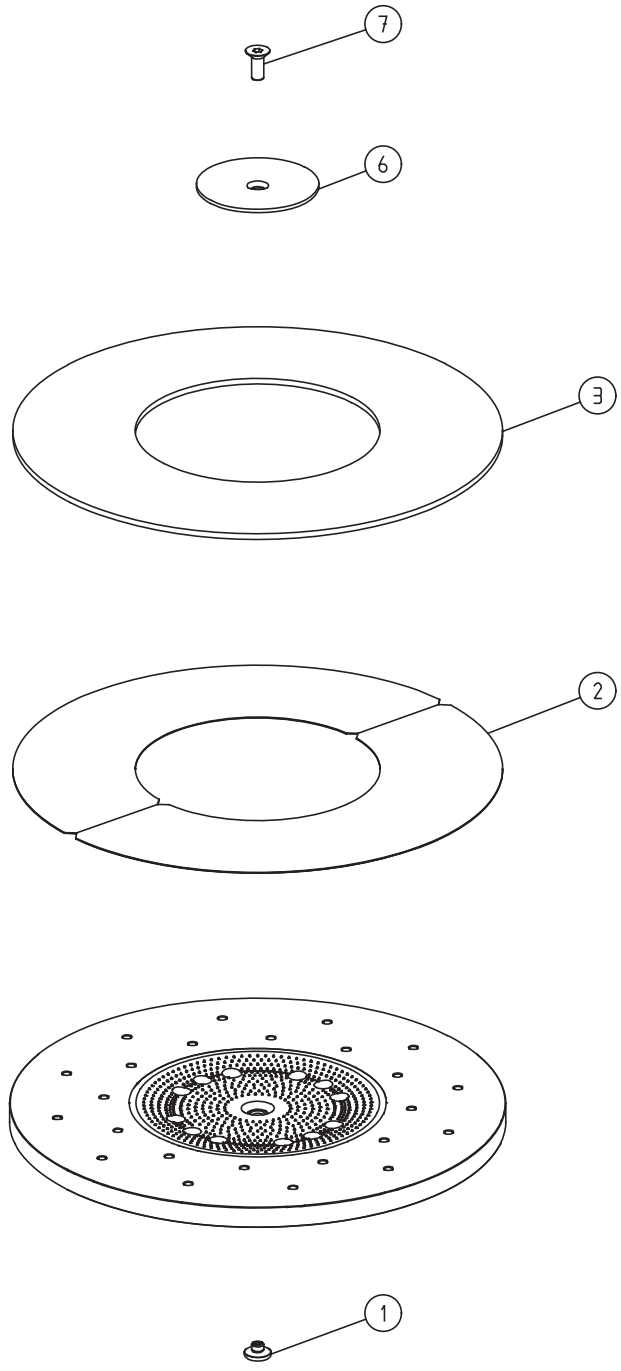


SINGLE 3  
01.01.2013

## SPARE PARTS

Item	Part number	Description
1	000.65.10.041	Running capacitor 40 $\mu$ F
2	000.65.10.061	Starting capacitor 60 $\mu$ F
3	850.65.00.200	Motor, 230 V / 50 CPS / 1.2 kW
4	000.65.80.061	Fuse, 6.3 A
5	000.65.82.010	Fuse holder
6	000.65.20.012	Contacteur
7	000.65.20.230	Relay
8	850.64.06.100	Adapter mounting
9	850.64.07.205	Shock absorber
10	850.64.08.100	Plate mounting
11	1481.0006.032	Spring type straight pin
12	6797.1008.000	Washer
13	7984.1008.030	Screw
14	9021.1005.000	Washer
15	7500.1005.012	Screw
16	850.65.80.100	Control electric system complete, 230 V / 50 Hz

SPARE PARTS



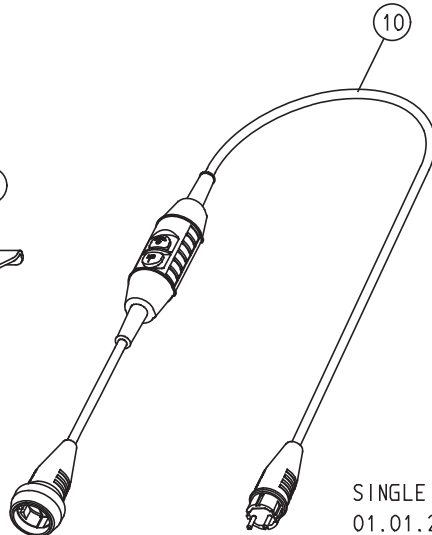
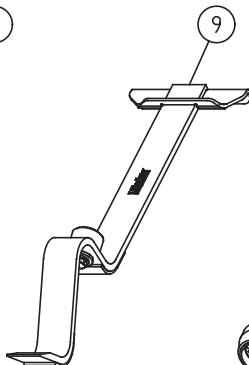
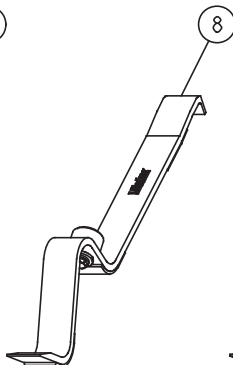
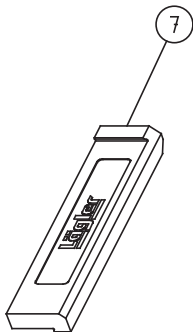
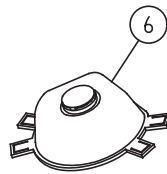
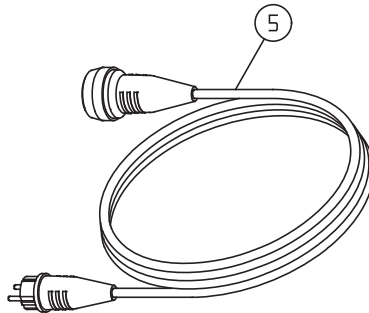
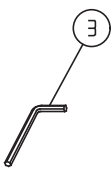
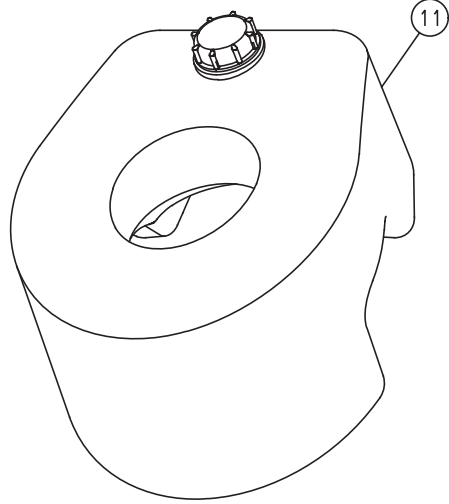
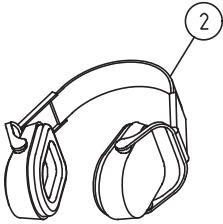
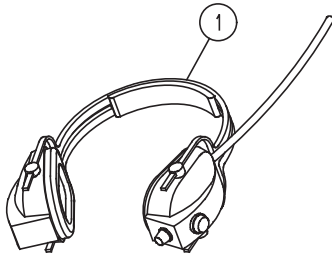
SINGLE 4  
01.01.2010

## SPARE PARTS

Item	Part number	Description
	850.02.10.100	Sanding plate SINGLE complete
1	850.02.06.200	Centering dome
2	850.02.11.100	Velcro coating, for pad and Velcro sanding disc (two parts necessary)
3	850.02.13.105	Velcro ring flexible
6	850.02.05.100	Paper tensioning disc
7	7991.1010.725	Screw, left-handed thread



SPARE PARTS



SINGLE 5  
01.01.2008

## SPARE PARTS

Item	Part number	Description
1	000.01.10.011	Foldable earmuff type MUSIMUFF with FM radio
2	000.01.10.021	Foldable earmuff type POCKET
3	000.93.11.061	Hexagonal socket screw wrench 6 mm
4	000.93.12.052	Hexagonal socket screw wrench 5 x 150 mm
5	000.65.53.251	Extension cable 3 x 2.5 mm <sup>2</sup> , 10 m long
6	000.01.20.010	Respiratory protection mask P3
7	701.10.00.100	Impact tool
8	702.00.00.200	Parquet layer tool ZUGEISEN, small
9	703.00.00.200	Parquet layer tool ZUGEISEN, broad
10	000.01.65.020	Safety switch PRCD-S (for German mains supply)
11	850.80.10.105	Additional weight SINGLE