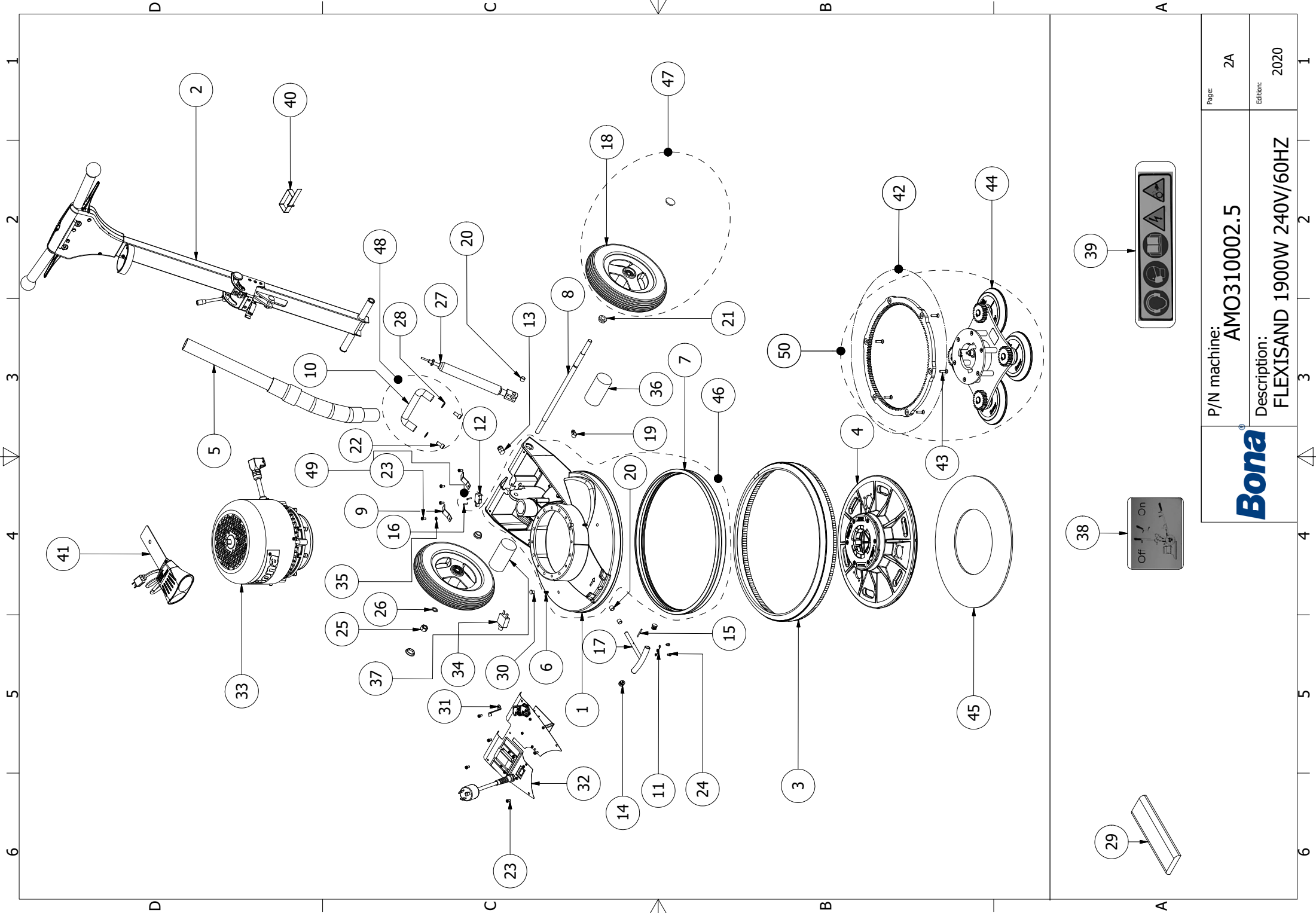
	P/N machine: <b>AMO310002.5</b>	Page: <b>1</b>
	Description: <b>FLEXISAND 1900W 240V/60HZ</b>	Edition: <b>2020</b>



P/N machine: AMO310002.5

Description: FLEXISAND 1900W 240V/60HZ

Page: 2A

Edition: 2020

A

A

1

2

3

4

5

6

D

D

C

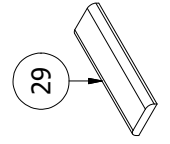
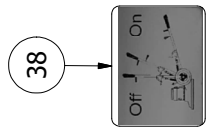
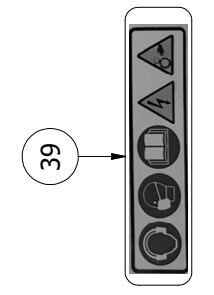
C

B

B

A

A



I

2


3

4

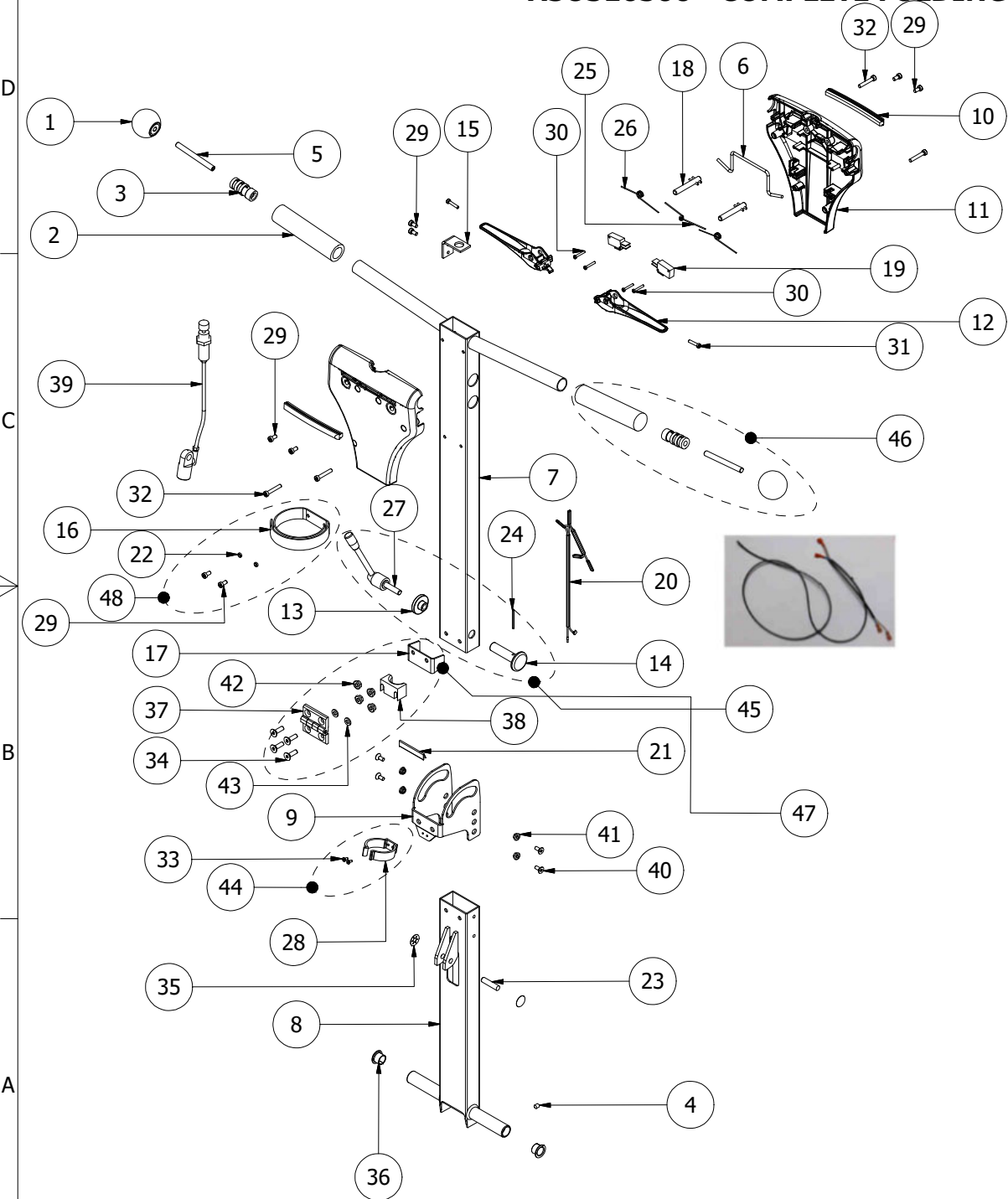
5

6

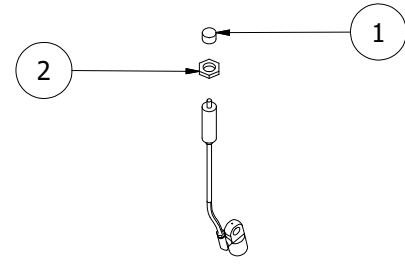
SPARE PARTS				SPARE PARTS			
ITEM	P/N	DESCRIPTION	QTY	ITEM	P/N	DESCRIPTION	QTY
1	ASO311001.3	FREILACKE GREY BED-FLEXISAND	1	26	ASO968206	SHIM 12X18X1	2
2	ASO316500	COMPLETE FOLDING HANDLE-FLEXISAND	1	27	ASK3199948101	GAS SPRING ASSEMBLY-FLEXISAND	1
3	ASO312102	DUST SKIRT FOR SANDING DISC-FLEXIS	1	28	ASK5802230004	WASHER 8.4x16X1.6 UNI6592 GALVANIZ.	2
4	ASO312511	PAD DRIVE DISC 16" APPLIX ASSEMBLY	1	29	ASK3100030471	CABLE GUARD PLASTIC STRIP 40MM	1
5	ASK3199940006	COMPLETE B.P.SUCTION LONG PIPE-FLEX	1	30	ASK3100030805	SNAP FIT BLACK PLUG-FLEXISAND BED	2
6	ASO947518	HELI-COIL M8X1.25X12	2	31	ASK3100030710	MOTOR PLUG SAFETY PLATE	1
7	ASO311002	RUBBER BUMPER-FLEXISAND	1	32	ASK3199940041	START.EQUIPMENT 1900W 240/60+SOCKET	1
8	ASO311004	HANDLE SHAFT-FLEXISAND	1	33	ASK3199943541	COMPL.RATIO-MOTOR+PLUG-1900W 240/60	1
9	ASO311010	PLASTIC CLAMP FOR CAPACITOR	2	34	ASK5299940095	TH.OVERL.CIRC.BREAKER 16A-ETA(1658)	1
10	ASO945129	BLACK LIFTING HANDLE	1	35	ASK5802233002	INT.SERR.LOCK WASHER D5 DIN6798/J G	1
11	ASO311018	TORSION SPRING SF-VFR7082	1	36	ASK3100030328	CAPACITOR 50MF FLEXI 1900W 50/60HZ	1
12	ASO903869	MICRO SWITCH D3V-162-1C5	1	37	ASK4600030119	START CAPACITOR 145-174 MF/330V	1
13	ASO903992	CABLE GUARD GLAND M12X1.5	1	38	ASO996412	HANDLE TILT WARNING LABEL	1
14	ASO929086	BLACK STOPPER 16/13-8	2	39	ASO996106	N.5 WARNING SYMBOL LABEL	1
15	ASO935332	CYLINDRICAL PIN D.3X32 (M6)	1	40	ASO929136	VELCRO TIE FOR CABLE L=300	1
16	ASO936118	SPRING PIN FRP 3X18	2	41	ASO319070	WORK LAMP 220V/60HZ-FLEXISAND	1
17	ASO311016	LIFTING HANDLE-FLEXISAND	1	42	ASK3199940082	INTERN.GEAR+6 TORX SCREWS M6X25-PD	1
18	ASO945390	WHEEL R250-50-2-E-S-K	2	43	ASK3199940081	SET OF 6 SCREWS M6X25 TORX COU.HEA.MFT-TT GA.	1
19	ASO945740	CABLE FIXING CLIP	1	44	ASK3199940997	POWERDRIVE W/OUT INT.GEAR F/FLEXIS.	1
20	ASO948810	TEFLON BUSHING-10/12X10 B	3	45	ASO312007	RUBBER PLATE FOR SANDING PAPER	1
21	ASO948425	FLANGED BUSHING-2992 JF14X10	2	46	ASO311050	MACHINE BED,RUBB.BUMPER INCL.-FLEXI	1
22	ASO952516	SCREW M8X16 HEX.SOCK.END CAP GALV.	2	47	ASO319915	WHEELS AND NUTS PAIR-FLEXISAND	1
23	ASO957913	SCREW M5X10 TORX CAP HE.TT DIN7500C	11	48	ASO319910	BACK HANDLE SET	1
24	ASO958009	SCREW M4X6 LOW HEAD MERLT	2	49	ASO319911	HANDLE TILT MICRO SWITCH ASSEMBLY	1
25	ASO960070	NUT ML6M M12 GALVANIZED	2	50	ASO312540	POWERDRIVE+INTERNAL GEAR F/FLEXIS.	1

	P/N machine: <b>AMO310002.5</b>	Page: 2B
	Description: <b>FLEXISAND 1900W 240V/60HZ</b>	Edition: 2020

# ASO316500 - COMPLETE FOLDING HANDLE-FLEXISAND

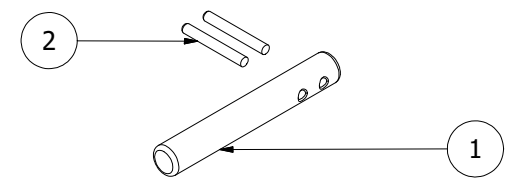


## ITEM (39) ASK3199948102 - GAS SPR. UPPER HOOKING ASSEMBLY-FLEX



SPARE PARTS			
ITEM	P/N	DESCRIPTION	QTY
1	ASK3100030450	HANDLE RELEASE BUTTON 18.5X10XM6	1
2	ASK3100030451	NUT M16X1.5X5 FOR HYDRAULIC RELEASE	1

## ITEM (18) ASO316504 - COMPL.ACCIDENT.START LOCKING BUTTON



SPARE PARTS			
ITEM	P/N	DESCRIPTION	QTY
1	ASO316004	START LOCK BUTTON PIN	1
2	ASO936935	PIN FRP 2.5X20	2

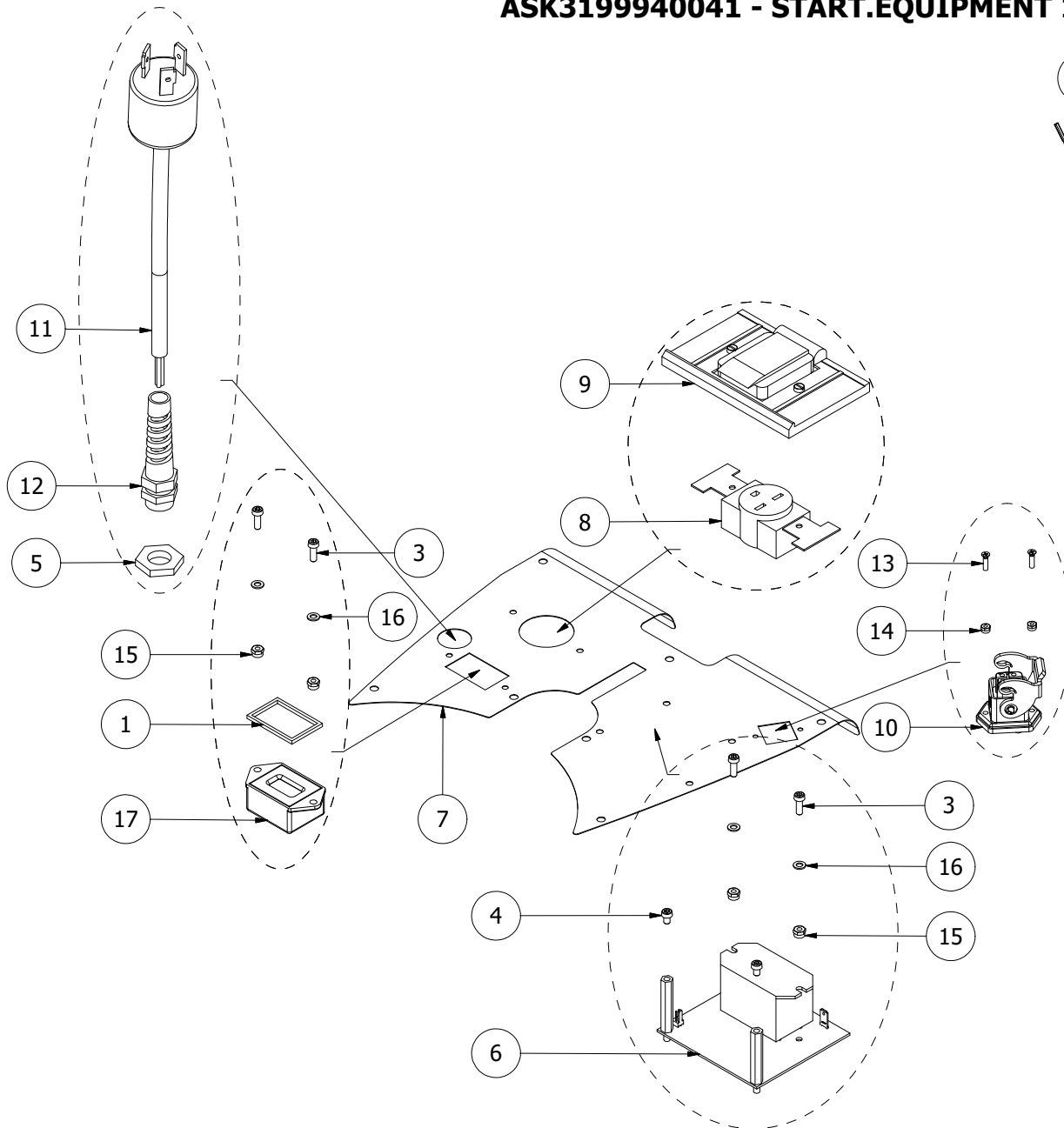
<b>Bona</b>	P/N machine: <b>AMO310002.5</b>	Page: 3A
	Description: <b>FLEXISAND 1900W 240V/60HZ</b>	Edition: 2020

## ASO316500 - COMPLETE FOLDING HANDLE-FLEXISAND

SPARE PARTS				SPARE PARTS			
ITEM	P/N	DESCRIPTION	QTY	ITEM	P/N	DESCRIPTION	QTY
1	ASO316026	HANDLE MACHINED KNOB D45	2	25	ASO942112	STARTING LEVER CENTRAL SPRING	1
2	ASO945580	HANDLE HANDGRIPS (PAIR)	1	26	ASO942305	STARTING LEVER SPRING	2
3	ASO945582	HANDLE RAWLPLUG	2	27	ASO945172	HANDLE ADJUSTMENT LEVER	1
4	ASO956412	GRUB SCREW M6X8-POINTED-ROUGH STEEL	1	28	ASO945566	PIPE HOOKING SPRING-VHA 51-60	1
5	ASO958708	THREADED PIN M8X80 GALVANIZED	2	29	ASO957913	SCREW M5X10 TORX CAP HE.TT DIN7500C	8
6	ASO311006	START LEVER LOCKING BRACKET	1	30	ASO957932	SCREW K30X20 TORX CAP HEAD WN1452	4
7	ASO316001	HANDLE UPPER FRAME	1	31	ASO957942	SCREW K40X20 TORX CAP HEAD WN1452	2
8	ASO316002	HANDLE LOWER FRAME-FLEXISAND	1	32	ASO957953	SCREW PT50X30 TORX CAP HEAD WN5452	4
9	ASO316002.C	HANDLE LOW.FRAME CONNECT.BRACKET-F	1	33	ASO958120	SCREW M3X8 TORX COUNTERSUNK HEAD	2
10	ASO316005	GUARD RUBBER	2	34	ASO958352	SCREW M6X20 MFT-TORX T30 GALVANIZED	4
11	ASO316011	HANDLE SHELL-FLEXISAND	2	35	ASO967300	LOCK WASHER 8X19X0.25/6	2
12	ASO316012	START LEVER-FLEXISAND	2	36	ASK3100030456	FLANGED BUSHING PTFE 14/16x22 L.12	2
13	ASO316014	HANDLE TIGHTENING FLANGE	1	37	ASK3100030470	STAINL.STEEL HINGE CMM-SST-50-SH-6	1
14	ASO316016	HANDLE TIGHTENING BOLT	1	38	ASK3100030472	CABLE PROTECTIVE BLOCK 38MM	1
15	ASO316017	HANDLE RELEASE BUTTON SUPPORT	1	39	ASK3199948102	GAS SPR.UPPER HOOKING ASSEMBLY-FLEX	1
16	ASO316020	VELCRO LOCK STRIP 400X20	1	40	ASO957813	SCREW M5X12 TORX CAP HEAD DIN7985 G	4
17	ASO316025	HINGE SUPPORT BRACKET	1	41	ASK5801430014	NUT M5 LOW SELF-LOCKING ST.STEEL	4
18	ASO316504	COMPL.ACCIDENT.START LOCKING BUTTON	2	42	ASK5801936001	NUT M6 LOW SELF-LOCKING DIN985	4
19	ASO903869	MICRO SWITCH D3V-16-1C5	2	43	ASK5802230003	WASHER 6.4X12.5 UNI6592 GALVANIZED	2
20	ASO319944	CABLE FOR HANDLE	1	44	ASO319923	VACUUM PIPE HOOKING SPRING ASSEMBLY	1
21	ASO929033	HANDLE JOINT GUARD RUBBER 10MM	1	45	ASO319917	HANDLE LOCK ASSEMBLY	1
22	ASO929087	BLACK PLASTIC WASHER 07-2-5	2	46	ASO316505	HANDLE KNOB ASSEMBLY (PAIR)	1
23	ASO935535	CYLINDRICAL PIN 8X36	1	47	ASK3199940100	STAINL.ST.HINGE ASSEMBLY-FLEXISAND	1
24	ASO936135	SPRING PIN FRP 3X35	1	48	ASO319922	VELCRO + SCREWS	1

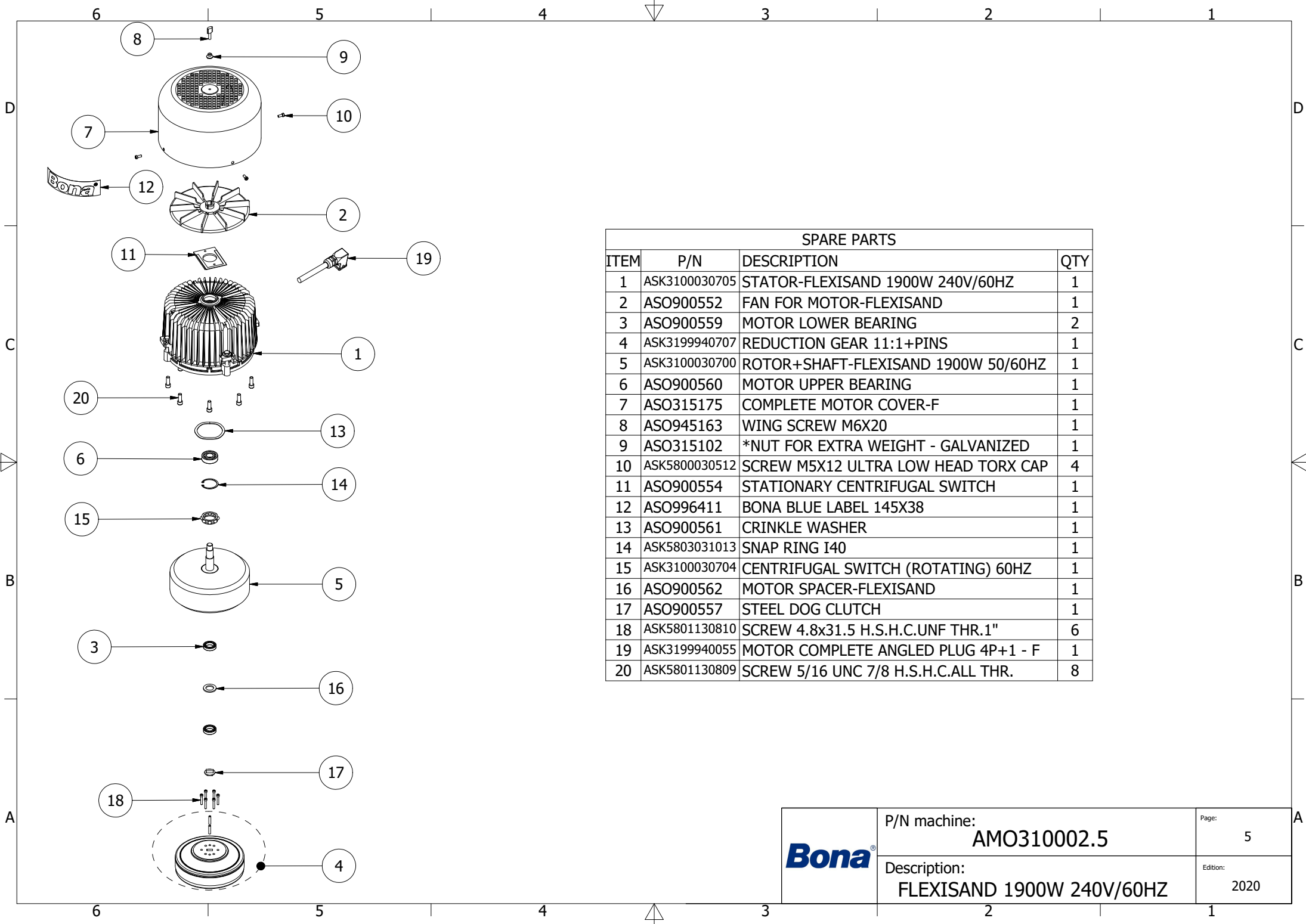
<b>Bona®</b>	P/N machine: <b>AMO310002.5</b>	Page: 3B
	Description: <b>FLEXISAND 1900W 240V/60HZ</b>	Edition: 2020

# ASK3199940041 - START.EQUIPMENT 1900W 240/60+SOCKET



SPARE PARTS			
ITEM	P/N	DESCRIPTION	QTY
1	ASO115173	GASKET FOR HOUR METER	1
2	ASO319944	CABLE FOR HANDLE	1
3	ASO957807	SCREW M4X12 TORX CAP HEAD DIN7985 G	4
4	ASO957812	SCREW M4X6 TORX CAP HE.DIN7985 GAL.	2
5	ASK2900030072	CAB.GLAND BLACK RING NUT PG13.5 UL	1
6	ASK3100030503	PRINTED CONTROL BOARD 240V US FLEXI	1
7	ASK3100030511	START.EQUIPM.PLATE F/SOCK.1900W60HZ	1
8	ASK3500030050	FLEXISAND AUXILIARY SOCKET 220/60HZ	1
9	ASK3500030051	FLEXIS.AUXIL.SOCKET COVER 220V/60HZ	1
10	ASK4699930019	ASYNCHR.MOTOR COMPLETE SOCKET 4P+1	1
11	ASK5100030002	BLACK UL CABLE +T.LOCK 30A	1
12	ASK5100030476	SPIR.CABLE BLACK LONG GLAND PG13.5	1
13	ASK5800530303	SCREW M3X12 CROSS REC.F.H.UNI7688 G	2
14	ASK5801933003	NUT M3 HIGH SELF-LOCK.GALVAN.DIN982	2
15	ASK5801933004	NUT M4 SELF-LOCKING GALVANIZ.DIN982	4
16	ASK5802230001	WASHER D4 GALVANIZED - FLAT	4
17	ASK7200030038	HOUR METER WITH DATA & INFO	1

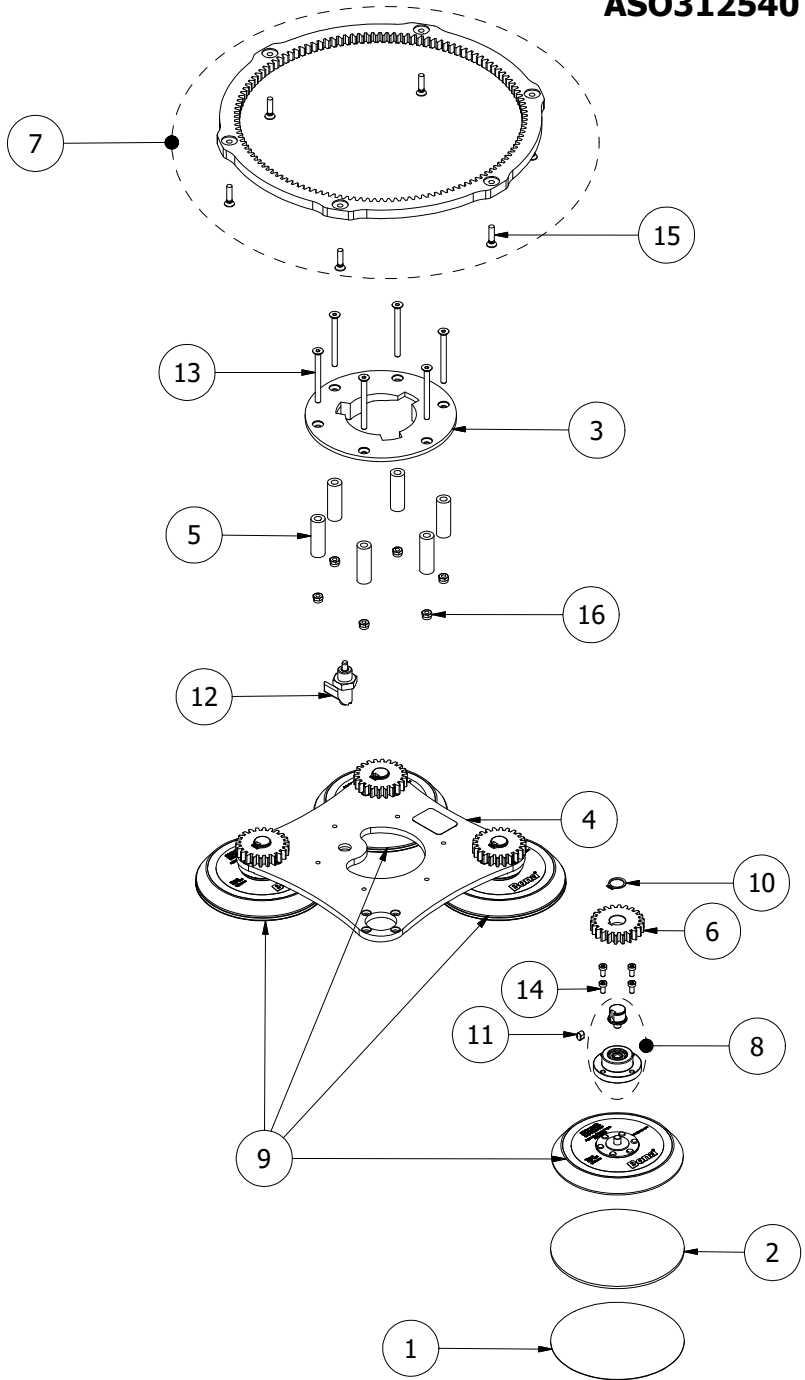
	P/N machine: <b>AMO310002.5</b>	Page: 4
	Description: <b>FLEXISAND 1900W 240V/60HZ</b>	Edition: 2020



SPARE PARTS			
ITEM	P/N	DESCRIPTION	QTY
1	ASK3100030705	STATOR-FLEXISAND 1900W 240V/60HZ	1
2	ASO900552	FAN FOR MOTOR-FLEXISAND	1
3	ASO900559	MOTOR LOWER BEARING	2
4	ASK3199940707	REDUCTION GEAR 11:1+PINS	1
5	ASK3100030700	ROTOR+SHAFT-FLEXISAND 1900W 50/60HZ	1
6	ASO900560	MOTOR UPPER BEARING	1
7	ASO315175	COMPLETE MOTOR COVER-F	1
8	ASO945163	WING SCREW M6X20	1
9	ASO315102	*NUT FOR EXTRA WEIGHT - GALVANIZED	1
10	ASK5800030512	SCREW M5X12 ULTRA LOW HEAD TORX CAP	4
11	ASO900554	STATIONARY CENTRIFUGAL SWITCH	1
12	ASO996411	BONA BLUE LABEL 145X38	1
13	ASO900561	CRINKLE WASHER	1
14	ASK5803031013	SNAP RING I40	1
15	ASK3100030704	CENTRIFUGAL SWITCH (ROTATING) 60HZ	1
16	ASO900562	MOTOR SPACER-FLEXISAND	1
17	ASO900557	STEEL DOG CLUTCH	1
18	ASK5801130810	SCREW 4.8x31.5 H.S.H.C.UNF THR.1"	6
19	ASK3199940055	MOTOR COMPLETE ANGLED PLUG 4P+1 - F	1
20	ASK5801130809	SCREW 5/16 UNC 7/8 H.S.H.C.ALL THR.	8

<b>Bona</b> <sup>®</sup>	P/N machine: <b>AMO310002.5</b>	Page: 5
	Description: <b>FLEXISAND 1900W 240V/60HZ</b>	Edition: 2020

# ASO312540 - POWERDRIVE+INTERNAL GEAR F/FLEXIS.



SPARE PARTS			
ITEM	P/N	DESCRIPTION	QTY
1	AAS471700505	SAND.DISK 8700 CERAMIC 150MM GRIT50	4
2	AAS472200008	INTERM.PAD 150MM F/DIAMOND ABRAS.	4
3	ASO312021	ALUMINIUM MACHINED HOOKING PLATE	1
4	ASO312070	PLATE-QUATTRODISC	1
5	ASO312071	SPACER D8xD16xH48	6
6	ASO312081	GEAR	4
7	ASK3199940082	INTERN.GEAR+6 TORX SCREWS M6X25-PD	1
8	ASO312240	BEARING HOUSING+HUB ASSEMBLY	4
9	ASO319934	N.4 SANDING PAD SET D150	1
10	ASO930018	SNAP RING SGA18	4
11	ASO932610	KEY 6X6X10	4
12	ASO945175	LOCKING PLUNGE M16 X 1.5	1
13	ASO953427	SCREW M6X70 HEX.SO.CO.HE.10.9 GALV.	6
14	ASO957913	SCREW M5X10 TORX CAP HE.TT DIN7500C	16
15	ASK3199940081	SET OF 6 SCREWS M6X25 TORX COU.HEA.MFT-TT GA.	1
16	ASK5801936001	NUT M6 LOW SELF-LOCKING DIN985	6

<b>Bona</b>	P/N machine: <b>AMO310002.5</b>	Page: 6
	Description: <b>FLEXISAND 1900W 240V/60HZ</b>	Edition: 2020