



spare parts list

Power X 1000 230V EU



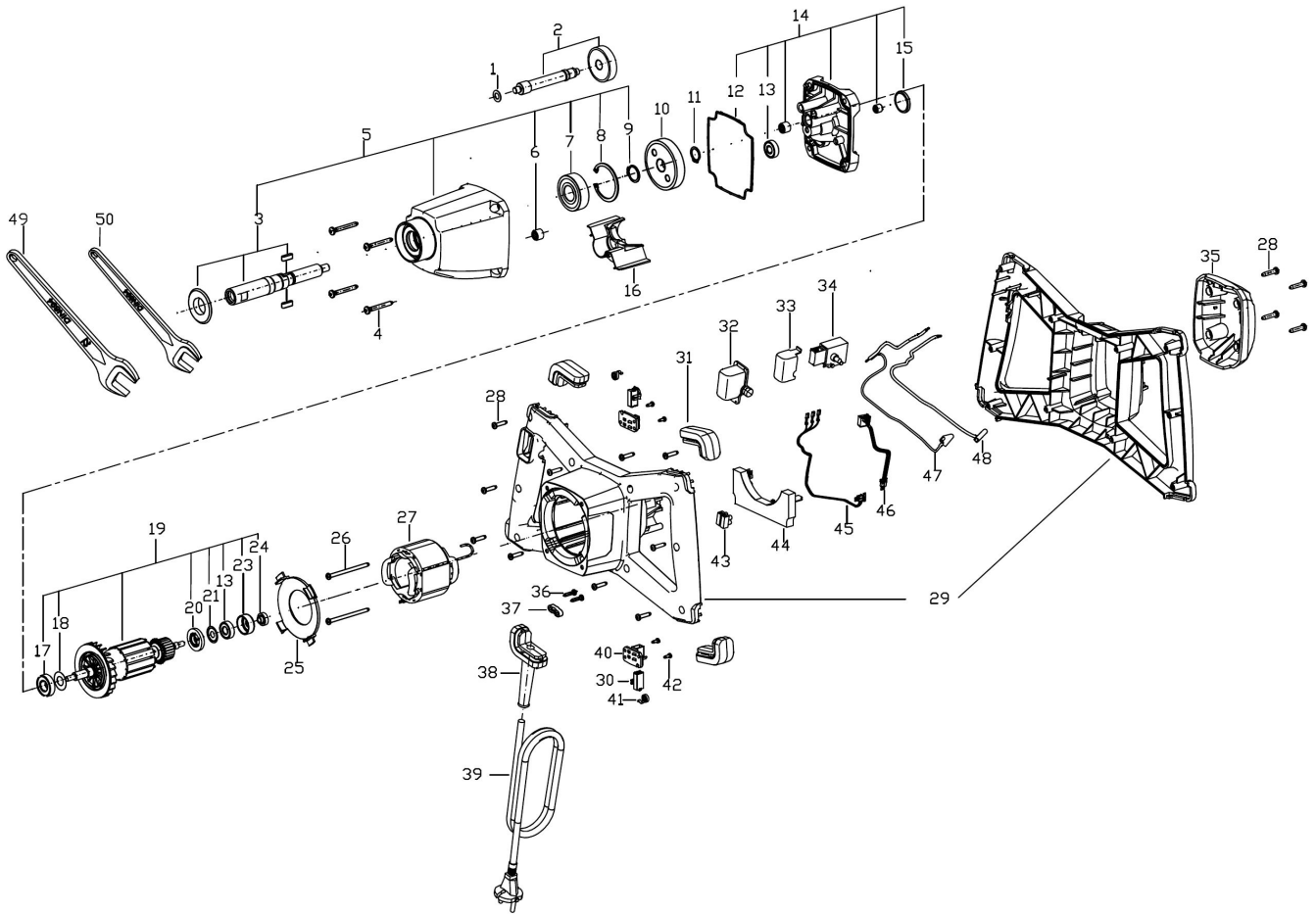
Table of contents

| | | |
|---|--|----|
| 1 | Stirring Unit Power X 1000 230V (011/2017-04/2020) | 3 |
| 1 | 1 Stirring Unit | 4 |
| 2 | 2 Circuit Diagram | 7 |
| 1 | Stirring Unit Power X 1000 230V (04/2020-heute) | 9 |
| 1 | 1 Stirring Unit | 10 |
| 2 | 2 Circuit Diagram | 13 |

1 Stirring Unit Power X 1000 230V (011/2017-04/2020)

| Item no. | Article no. | Description |
|-----------------|--------------------|--------------------|
| 1 | 01_01_083924 | Stirring Unit |
| 2 | 01_230V_PowerX | Circuit Diagram |

1 Stirring Unit



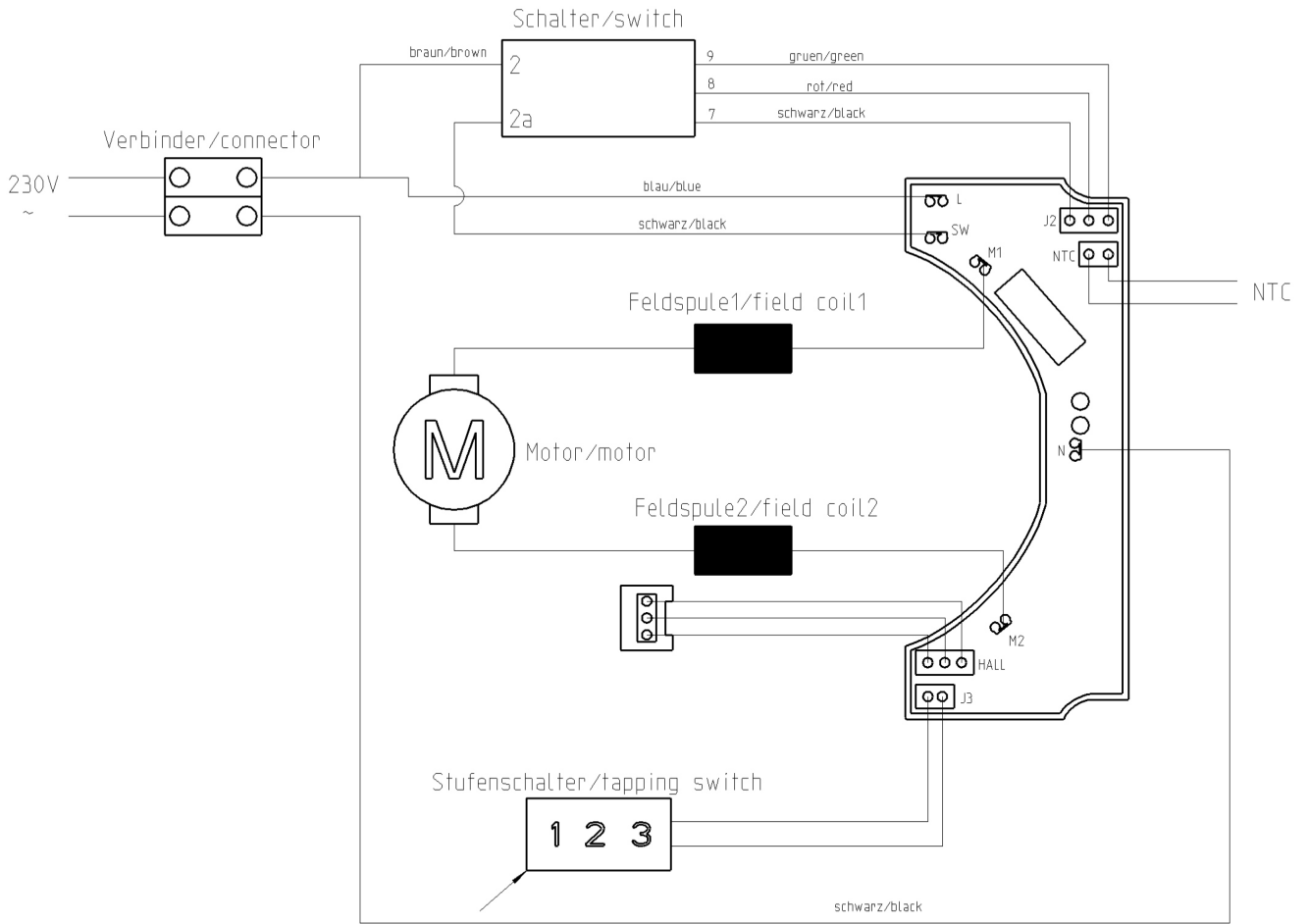
1 Stirring Unit

| Item no. | Article no. | Description | Quantity |
|----------|-------------|---|----------|
| 1 | 084858 | Distance ring 1 Power X 1000/1600 | 1 |
| 2 | 084859 | Gear shaft cpl. Power X1000 | 1 |
| 3 | 084860 | Spindle-Set Power X1000 | 1 |
| 4 | 084861 | Bolt 4,8x40 Power X1000/1600 | 4 |
| 5 | 084862 | Gearbox cpl. Power X1000 | 1 |
| 6 | 084863 | Needle roller bearings Power X1000/1600 | 1 |
| 7 | 084864 | Ball bearing Power X1000/1600 | 1 |
| 8 | 084867 | Circlip Power X1000/1600 | 1 |
| 9 | 084868 | Circlip drive shaft 1 Power X1000/1600 | 1 |
| 10 | 084870 | Spindle wheel Power X1000/1600 | 1 |
| 11 | 084871 | Circlip drive shaft 2 Power X1000/1600 | 1 |
| 12 | 084873 | Sealing ring Power X1000/1600 | 1 |
| 13 | 084874 | Grooved ball bearings Power X1000/1600 | 1 |
| 13 | 084874 | Grooved ball bearings Power X1000/1600 | 1 |
| 14 | 084875 | Gear block housing Set Power X1000 | 1 |
| 15 | 084876 | O-Ring Power X1000/1600 | 1 |
| 16 | 084877 | Grease compartment barrier Power X | 1 |
| 17 | 084878 | Ball bearing Power X1000/1600 | 1 |
| 18 | 084879 | Distance ring 2 Power X1000/1600 | 1 |
| 19 | 084880 | Armature cpl. Power X1000 | 1 |
| 20 | 084883 | Labyrinth ring Power X1000/1600 | 1 |
| 21 | 084884 | Distance ring 3 Power X1000/1600 | 1 |
| 23 | 084885 | Bearing sleeve Power X1000/1600 | 1 |
| 24 | 084886 | Annular magnet Power X1000/1600 | 1 |
| 25 | 084887 | Air guide Power X1000/1600 | 1 |
| 26 | 084889 | Bolt 4,2x65 Power X1000/16000 | 2 |
| 27 | 084890 | Magnetic field coils Power X1000 | 1 |
| 28 | 084891 | Bolt 4,2x19 Power X1000/1600 | 10 |
| 28 | 084891 | Bolt 4,2x19 Power X1000/1600 | 4 |
| 29 | 084892 | Motor housing Power X1000 | 1 |
| 30 | 084893 | Carbon brush Power X1000/1600 | 2 |
| 31 | 084894 | Edge protector Power X1000/1600 | 3 |
| 32 | 084895 | Switch cover Power X1000/1600 | 1 |
| 33 | 084896 | Push button Power X1000/1600 | 1 |

1 Stirring Unit

| Item no. | Article no. | Description | Quantity |
|----------|-------------|--|----------|
| 34 | 084897 | Switch Power X1000/1600 SEE 164988 | 1 |
| 34 | 164985 | Repair kit PowerX 1000 | 1 |
| 35 | 084898 | Cover Power X1000/1600 | 1 |
| 36 | 084899 | Bolt 3,5x16 Power X1000/1600 | 2 |
| 37 | 084900 | Cable retention Power X1000/1600 | 1 |
| 38 | 084902 | Edge protector with Cable sleeve Power X | 1 |
| 39 | 084903 | Wire Power X1000/1600 | 1 |
| 40 | 084905 | Carbon brush holder Power X1000/1600 | 2 |
| 41 | 084906 | Spring Power X1000/1600 | 2 |
| 42 | 084907 | Bolt 2,9x8 Power X1000/1600 | 4 |
| 43 | 084908 | Terminal strip Power X1000/1600 | 1 |
| 44 | 084909 | Electronic Power X1000 | 1 |
| 45 | 084910 | Cable kit Power X1000/1600 | 1 |
| 46 | 084912 | Electronic Sensor Power x1000/1600 | 1 |
| 47 | 084913 | Braid cpl. Power X1000/1600 | 1 |
| 48 | 084914 | Braid cpl. black Power X1000/1600 | 1 |
| 49 | 067880 | Fork wrench SW22 DIN894 X900,1100,1300 | 1 |
| 50 | 067879 | Fork wrench SW19 DIN894 X900,1100,1300 | 1 |

2 Circuit Diagram



nur für PowerX 1202/1200
only for PowerX 1202/1200

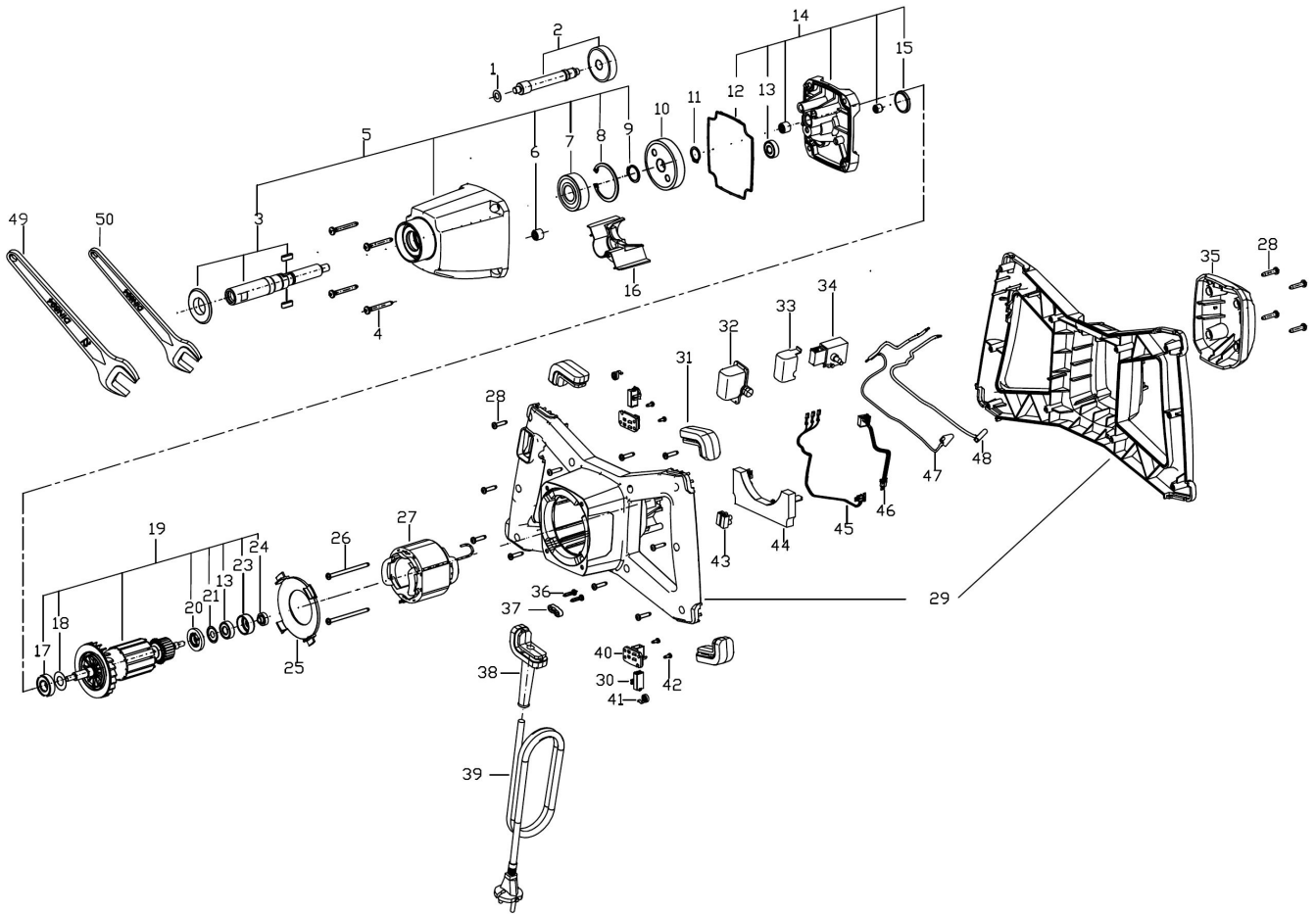
A-A
1:1

2 Circuit Diagram

1 Stirring Unit Power X 1000 230V (04/2020-heute)

| Item no. | Article no. | Description |
|----------|----------------|-----------------|
| 1 | 01_01_083924 | Stirring Unit |
| 2 | 01_230V_PowerX | Circuit Diagram |

1 Stirring Unit



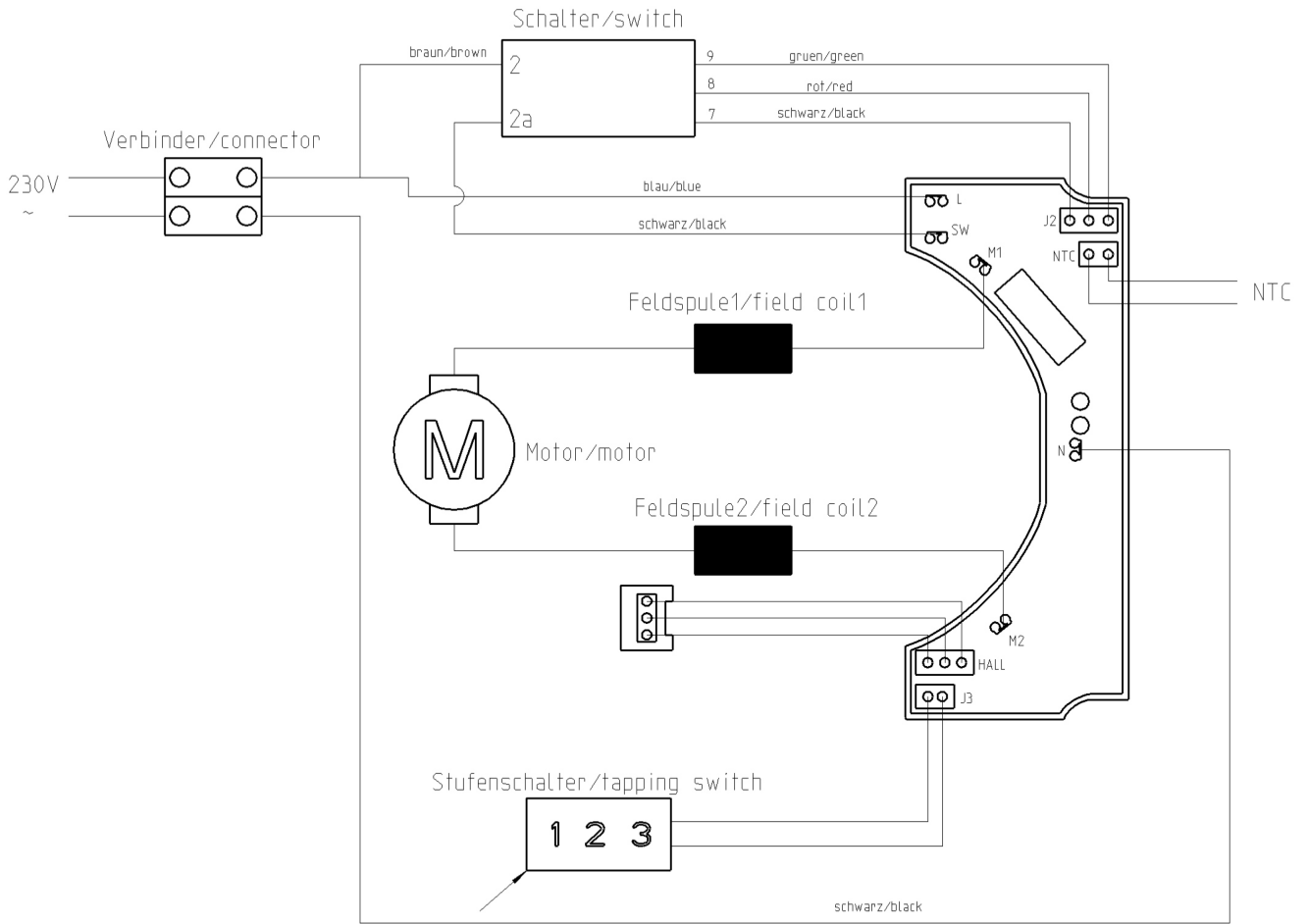
1 Stirring Unit

| Item no. | Article no. | Description | Quantity |
|----------|-------------|---|----------|
| 1 | 084858 | Distance ring 1 Power X 1000/1600 | 1 |
| 2 | 084859 | Gear shaft cpl. Power X1000 | 1 |
| 3 | 084860 | Spindle-Set Power X1000 | 1 |
| 4 | 084861 | Bolt 4,8x40 Power X1000/1600 | 4 |
| 5 | 084862 | Gearbox cpl. Power X1000 | 1 |
| 6 | 084863 | Needle roller bearings Power X1000/1600 | 1 |
| 7 | 084864 | Ball bearing Power X1000/1600 | 1 |
| 8 | 084867 | Circlip Power X1000/1600 | 1 |
| 9 | 084868 | Circlip drive shaft 1 Power X1000/1600 | 1 |
| 10 | 084870 | Spindle wheel Power X1000/1600 | 1 |
| 11 | 084871 | Circlip drive shaft 2 Power X1000/1600 | 1 |
| 12 | 084873 | Sealing ring Power X1000/1600 | 1 |
| 13 | 084874 | Grooved ball bearings Power X1000/1600 | 1 |
| 13 | 084874 | Grooved ball bearings Power X1000/1600 | 1 |
| 14 | 084875 | Gear block housing Set Power X1000 | 1 |
| 15 | 084876 | O-Ring Power X1000/1600 | 1 |
| 16 | 084877 | Grease compartment barrier Power X | 1 |
| 17 | 084878 | Ball bearing Power X1000/1600 | 1 |
| 18 | 084879 | Distance ring 2 Power X1000/1600 | 1 |
| 19 | 084880 | Armature cpl. Power X1000 | 1 |
| 20 | 084883 | Labyrinth ring Power X1000/1600 | 1 |
| 21 | 084884 | Distance ring 3 Power X1000/1600 | 1 |
| 23 | 084885 | Bearing sleeve Power X1000/1600 | 1 |
| 24 | 084886 | Annular magnet Power X1000/1600 | 1 |
| 25 | 084887 | Air guide Power X1000/1600 | 1 |
| 26 | 084889 | Bolt 4,2x65 Power X1000/16000 | 2 |
| 27 | 084890 | Magnetic field coils Power X1000 | 1 |
| 28 | 084891 | Bolt 4,2x19 Power X1000/1600 | 10 |
| 28 | 084891 | Bolt 4,2x19 Power X1000/1600 | 4 |
| 29 | 164985 | Repair kit PowerX 1000 | 1 |
| 30 | 084893 | Carbon brush Power X1000/1600 | 2 |
| 31 | 084894 | Edge protector Power X1000/1600 | 3 |
| 32 | 084895 | Switch cover Power X1000/1600 | 1 |
| 33 | 164987 | Pushbutton PowerX 1000/1600 from 2020 | 1 |

1 Stirring Unit

| Item no. | Article no. | Description | Quantity |
|----------|-------------|--|----------|
| 34 | 164988 | Switch Power X 1000/1600 from 2020 | 1 |
| 35 | 084898 | Cover Power X1000/1600 | 1 |
| 36 | 084899 | Bolt 3,5x16 Power X1000/1600 | 2 |
| 37 | 084900 | Cable retention Power X1000/1600 | 1 |
| 38 | 084902 | Edge protector with Cable sleeve Power X | 1 |
| 39 | 084903 | Wire Power X1000/1600 | 1 |
| 40 | 084905 | Carbon brush holder Power X1000/1600 | 2 |
| 41 | 084906 | Spring Power X1000/1600 | 2 |
| 42 | 084907 | Bolt 2,9x8 Power X1000/1600 | 4 |
| 43 | 084908 | Terminal strip Power X1000/1600 | 1 |
| 44 | 084909 | Electronic Power X1000 | 1 |
| 45 | 084910 | Cable kit Power X1000/1600 | 1 |
| 46 | 084912 | Electronic Sensor Power x1000/1600 | 1 |
| 47 | 084913 | Braid cpl. Power X1000/1600 | 1 |
| 48 | 084914 | Braid cpl. black Power X1000/1600 | 1 |
| 49 | 067880 | Fork wrench SW22 DIN894 X900,1100,1300 | 1 |
| 50 | 067879 | Fork wrench SW19 DIN894 X900,1100,1300 | 1 |

2 Circuit Diagram



nur für PowerX 1202/1200
only for PowerX 1202/1200

A-A
1:1

2 Circuit Diagram
