



spare parts list Sigma 550 230V EU



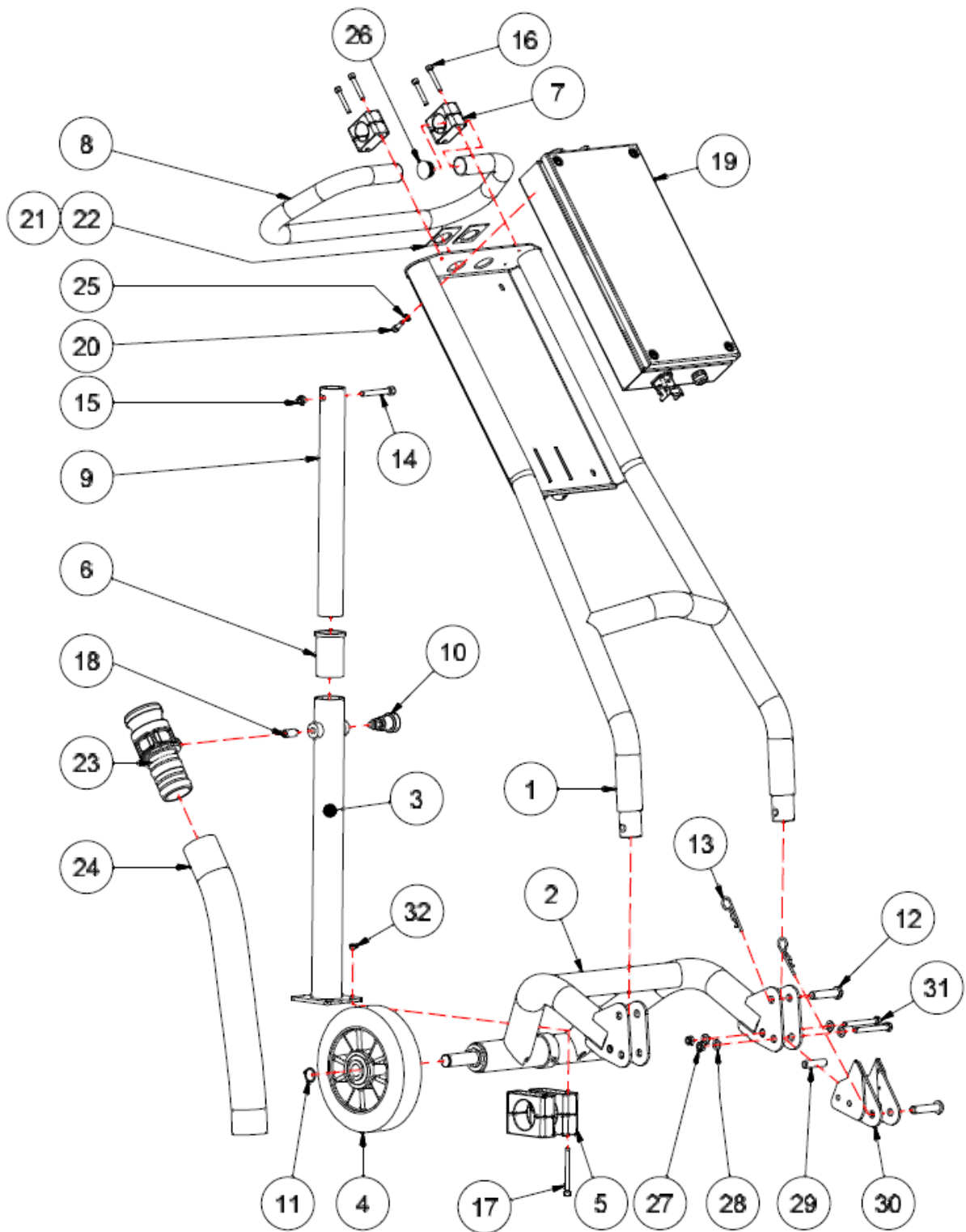
Table of contents

1 Sigma 550 Triple Disc 230V EU (2012 bis 09.2018)	3
1 Chassi	4
2 Motor Head	6
3 Grinding head	8
4 Grinding holder	11
5 Circuit diagram	13
6 Circuit diagram	15
7 Circuit diagram	17
2 Sigma 550 Triple Disc 230V EU (09.2018 - heute)	19
1 Chassi	20
2 Motor Head	22
3 Grinding head	24
4 Grinding holder	27
5 Circuit diagram	29
6 Circuit diagram	31
7 Circuit diagram	33

1 Sigma 550 Triple Disc 230V EU (2012 bis 09.2018)

Item no.	Article no.	Description
1	01_01_066176	Chassi
2	01_02_066176	Motor Head
3	01_03_066176	Grinding head
4	01_04_066176	Grinding holder
5	01_05_066176	Circuit diagram
6	01_06_066176	Circuit diagram
7	01_07_066176	Circuit diagram

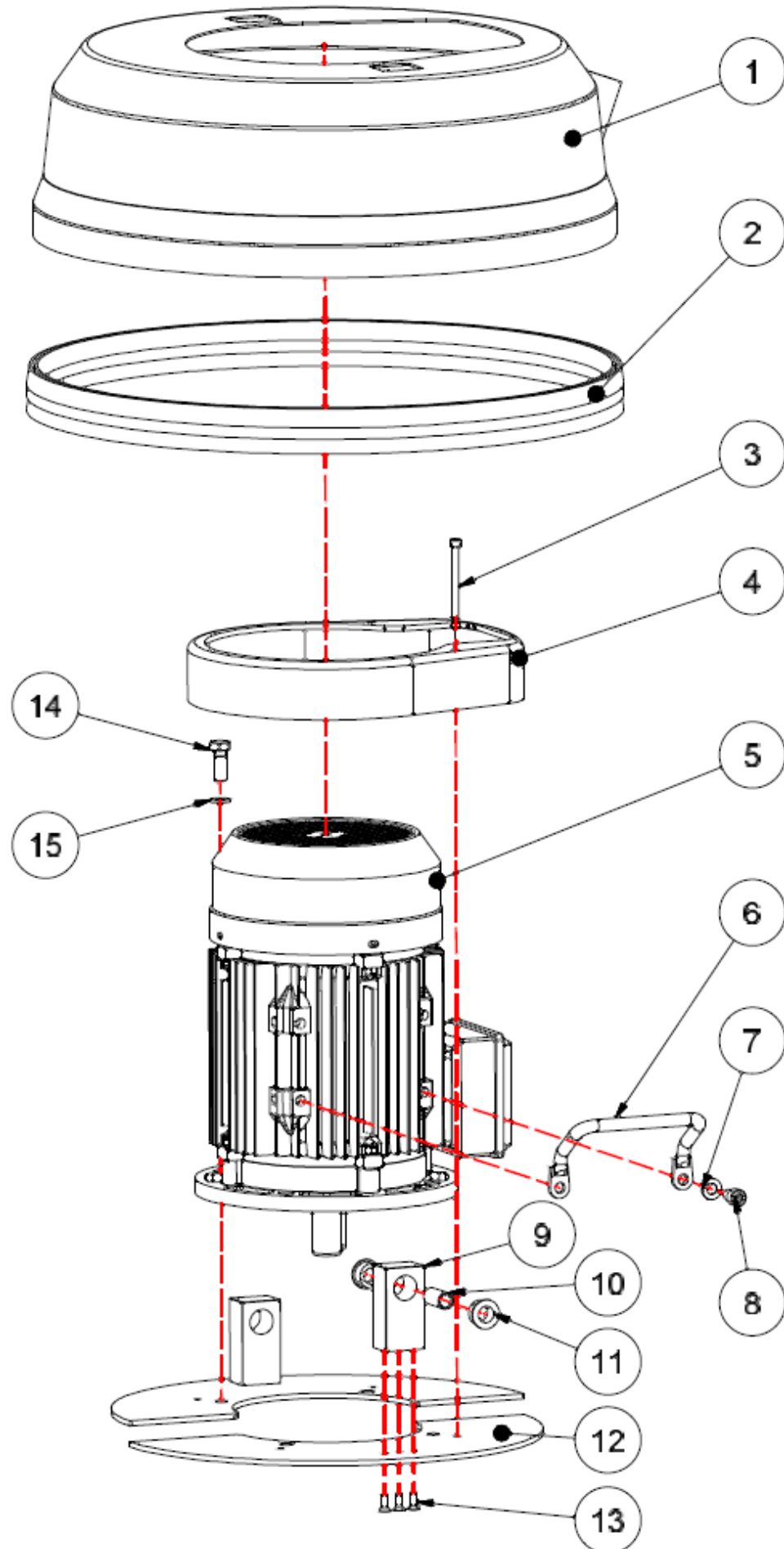
1 Chassi



1 Chassi

Item no.	Article no.	Description	Quantity
1		Chassi upper Sigma 550	1
2		Chassi bottom Sigma 550	1
3	082511	Outer tube Sigma 550	1
4	084162	Spare wheel HTC 420 grau Sigma 550	2
5		Pipe clamp Sigma 550	2
6	082509	Plastic guide bush Sigma 550	1
7		Pipe clamp Alu Sigma 550	2
8		Chassis handel Sigma 550	1
9	084163	Inner tube Sigma 550	1
10		Handle lock Sigma 550	1
11	084164	Safety washer outside axis Sigma 550	2
12		Safety pin 12x55 Sigma 550	4
13		Spring clip Sigma 550	4
14		Screw M8x60	1
15		Locknut M8	1
16		Screw M6x40	4
17		Screw M6x70	4
18	084165	Headless pin M12x25 Sigma 550	1
19		Power unit Sigma 550 3x230V	1
19		Power unit Sigma 550 3x400V	1
19		Power unit Sigma 550 3x460V	1
20		Screw M6x16	4
21		Overlay Sigma 550 "ON-OFF"	1
22		Overlay Sigma 550 "EM-STOP"	1
23	069042	Camlock connection Sigma 550	1
24	072946	Hose 51mm l=0,5m Sigma 550	1
25		Washer M6	4
26		End cap Sigma 550	2
27		Locknut M8	4
28		Washer M8	12
29		Distance sleeve Sigma 550	2
30		Adapter grinding head Sigma 550	2
31		Screw M8x70	4
32		Locknut M6	4

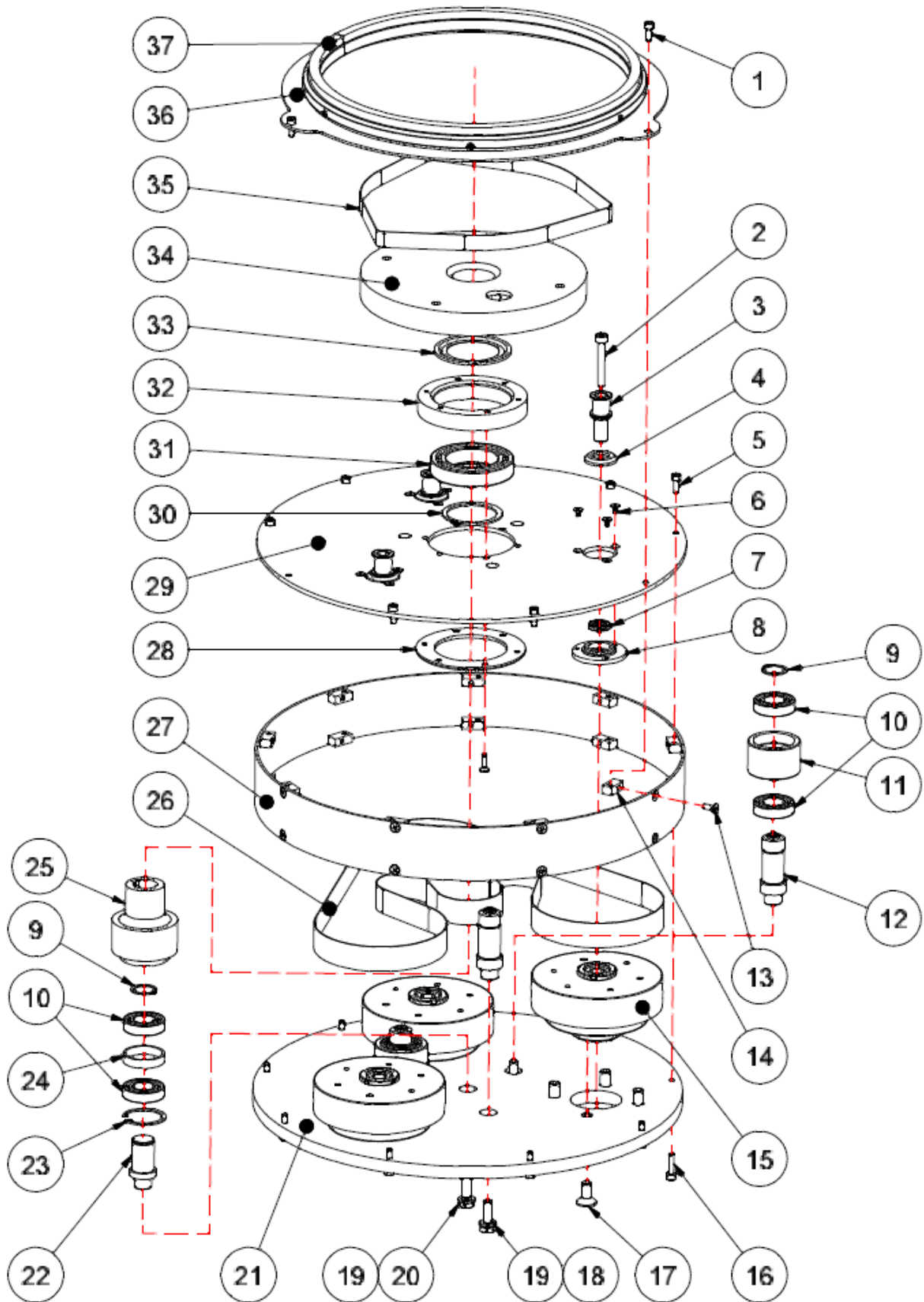
2 Motor Head



2 Motor Head

Item no.	Article no.	Description	Quantity
1	088382	Dust Cover Sigma 550	1
2	066216	Brush ring Sigma	1
3		Screw MC6S M6x70 8.8 FZB	2
4		Cover guide Sigma 550	1
5	087560	Motor 4kw 230/400V IE3 Sigma 550	1
6		Lift handel 4 kW Motor Sigma 550	2
7	072679	Washer BRB 10,5x22x2 Sigma 550	4
8		Screw MC6S M8x16 8.8 FZB	4
9	088365	Hinge holder for bushing SIGMA 550	2
10	087828	Guide bush Motor Sigma 550	2
11	081837	Rubber Bushing GL Sigma 550	4
12		Motor Plate Sigma 550	2
13	068777	Counter sunk screw M6x16 FZB 8,8 SIGMA	6
14		Screw M6SH M12x30 8.8 FZB	4
15		Washer BRB M12 FZB	4

3 Grinding head



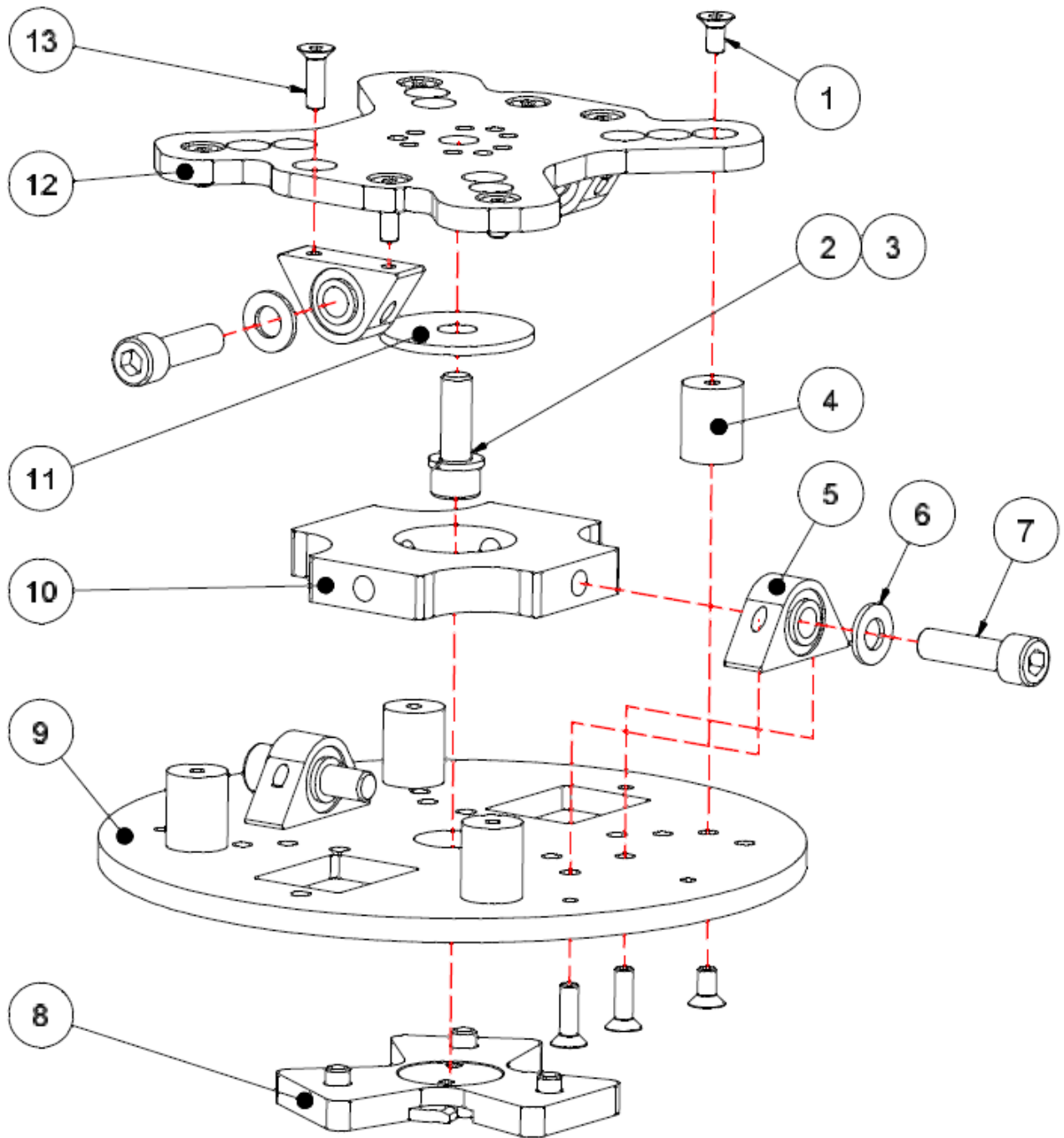
3 Grinding head

Item no.	Article no.	Description	Quantity
1		Screw MC6S M6x20 8.8 FZB	3
2	081635	Screw MC6S M8x55 12.9 Sigma550	3
3	081636	Shaft Tap Sigma550	3
4	081637	Gammaring Sigma550	3
5		Screw MC6S M6x16 8.8 FZB	6
6	081641	Screw MFTS M5x10 Sigma550	9
7	081643	Sealing Sigma550	3
8	081644	Seal cover Sigma550	3
9	081663	Safety washer SGA25 Sigma 550	2
10	081664	Ball-bearing 6005 2RS C3 Sigma 550	6
11	081665	Press wheel Sigma 550	2
12	081666	Shaft press wheel Sigma 550	3
13	068777	Counter sunk screw M6x16 FZB 8,8 SIGMA	18
14		Counter bushing Sigma 550	18
15	081667	Pulley assembly cpl. Sigma 550	3
16	081668	Screw M6x25 12.9 FZB Sigma 550	9
17	081669	Screw M12x1,25x20 10.9 Sigma 550	12
18		SCREW M6SH M10x25 12.9	1
19		Washer TBRSB M10	4
20	081670	Screw M6SH M10x25 Sigma 550	3
21		Lower cover Sigma 550	1
22	087555	Shaft Center Pulley Sigma 550	1
23	087556	Circlip internal 47x1.75DIN472 Sigma 550	1
24	087557	Distance Centerpulley Sigma 550	1
25	087558	Center Pulley Sigma 550 HUB	1
26	071045	Inner belt Sigma 550	1
27		Edging stripe Sigma 550	1
28		Cover center Sigma 550	1
29		Upper lid Sigma 550	1
30		Circlip SGA 60 Sigman 550	1
31	081638	Ball bearing 6204 2RS Sigma550	1
32	081639	Housing centre Sigma550	1
33	081640	Nilos ring Sigma550	1
34		Engine plate Sigma 550	1

3 Grinding head

Item no.	Article no.	Description	Quantity
35	069874	Belt up Sigma 550	1
36		Safety cover with brush Sigma 550	1
37		Brush strip Sigma 550	1

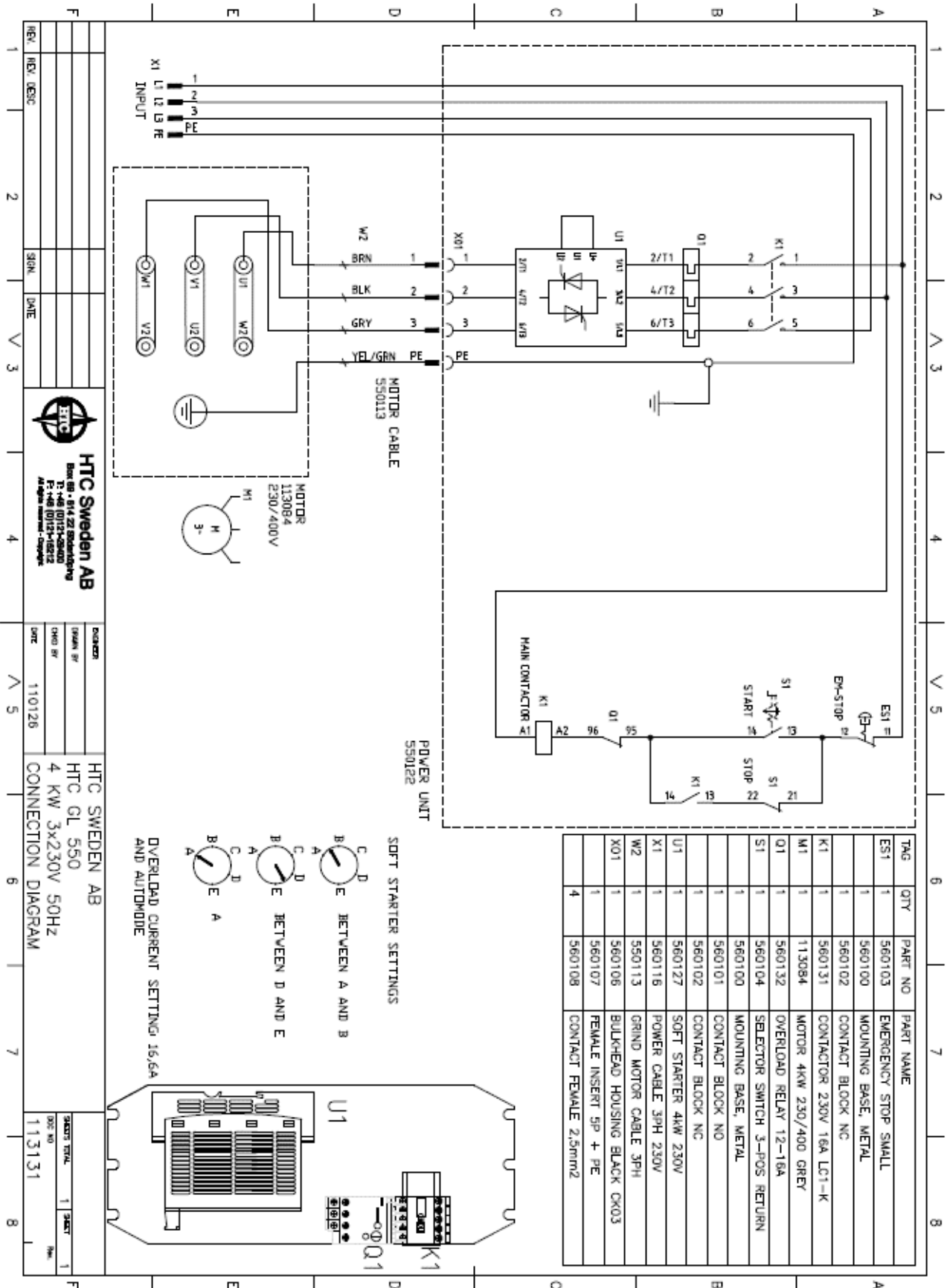
4 Grinding holder



4 Grinding holder

Item no.	Article no.	Description	Quantity
1	072632	Screw MFTS M6x12 10,9 FZB SIGMA	8
2	080508	Screw M10x30 10.9 FZB Sigma 550	1
3	080509	Washer M10 FZB Sigma 550	4
4	072614	Shock absorder 20x25 M6 Sigma 550	1
5		Ear cardan Sigma 550	4
6	072679	Washer BRB 10,5x22x2 Sigma 550	4
7		Screw MC6S M10x35 8.8 FZB	4
8	073110	Cross complete SIGMA 550	1
9	080510	Grind Holder Plate Sigma Triple D	1
10	080511	Cardan connection Sigma 550	1
11	080512	Washer Sigma Triple Disc	1
12	080513	Upper Grind Holder Plate Sigma Triple D	1
13		Screw MFTS M6x20 10.9 FZB	8

5 Circuit diagram

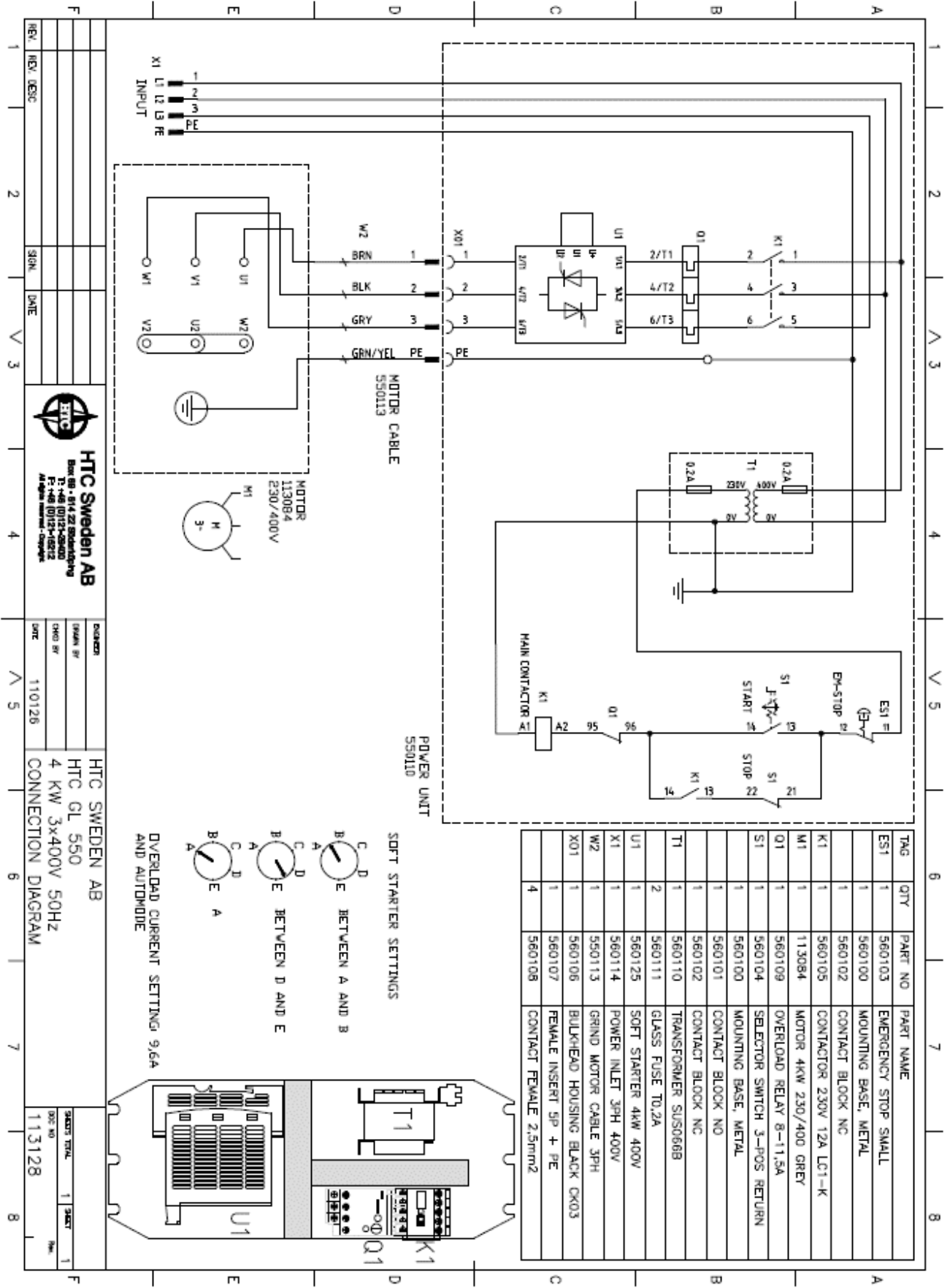


5 Circuit diagram

Item no.

1

6 Circuit diagram



HTC Sweden AB
 Box 88 • 814 ZJ Eskilstuna
 Tel: +46 (0)123-80400
 Fax: +46 (0)123-18212
 Address: Sweden • Europe

HTC SWEDEN AB
 HTS GL 550
 4 KW 3x400V 50HZ
 CONNECTION DIAGRAM

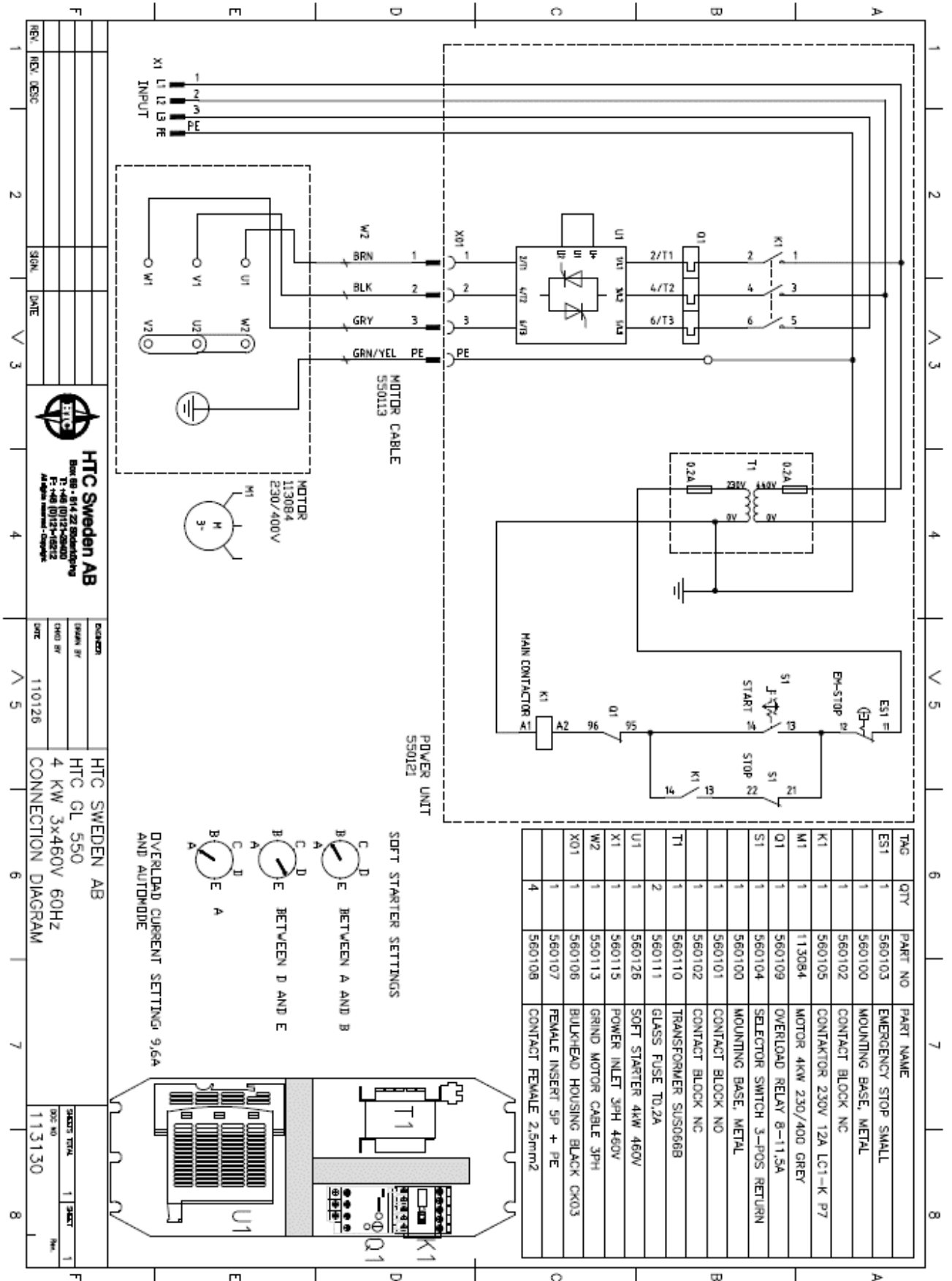
QUANTITY: 1
 PART NO: 113128

6 Circuit diagram

Item no.

1

7 Circuit diagram



HTC Sweden AB
 Box 88 · 614 22 Skövde SV
 T: +46 (0)71-428000
 F: +46 (0)71-428001
 Attn: Sales Dept

REVISION	DATE	DESCRIPTION
REV. 001	11/01/26	110126

HTC SWEDEN AB
 HTC GL 550
 4 KW 3x460V 60HZ
 CONNECTION DIAGRAM

SHEET TOTAL	1	SHEET	1
DOC NO	113130		

7 Circuit diagram

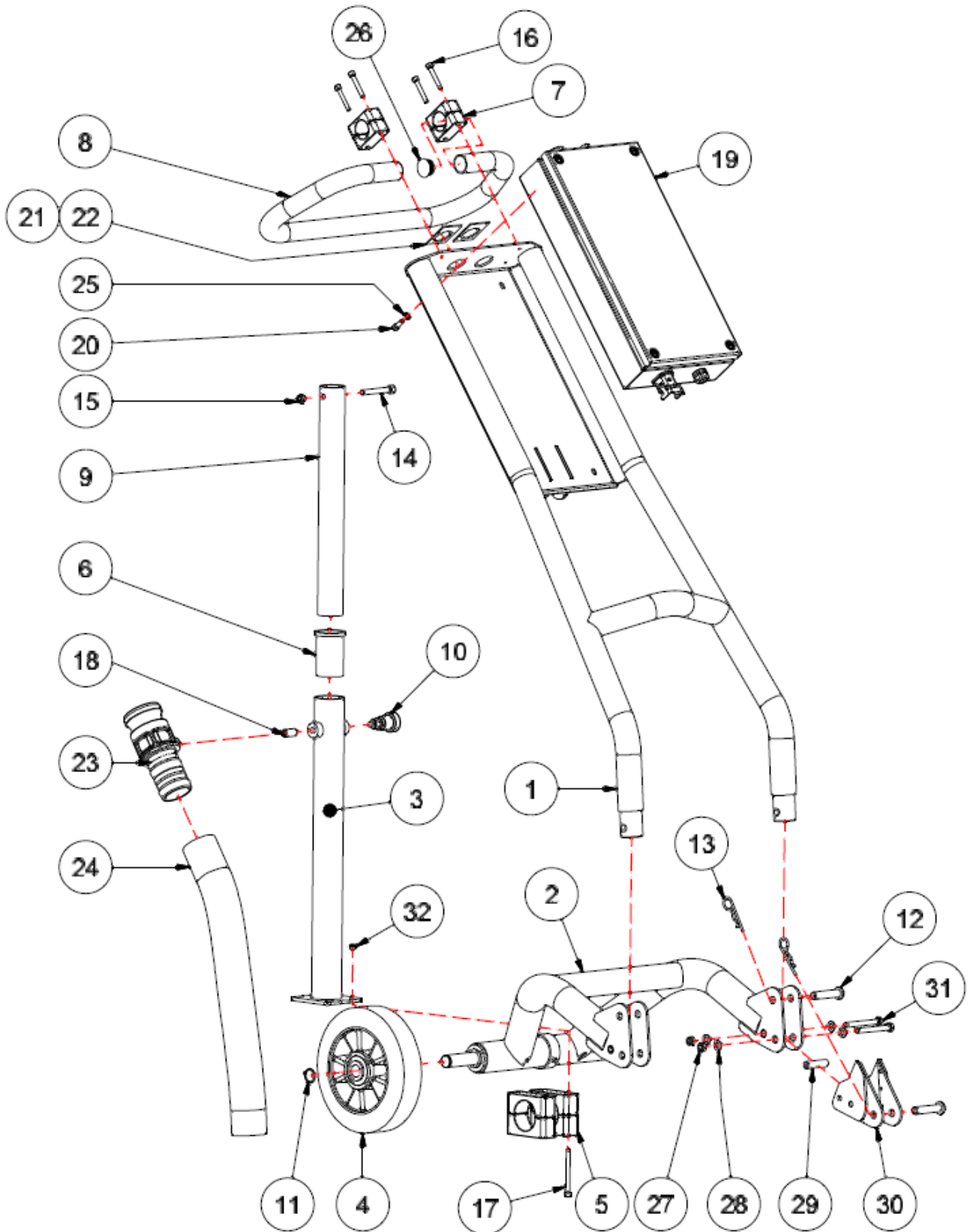
Item no.

1

2 Sigma 550 Triple Disc 230V EU (09.2018 - heute)

Item no.	Article no.	Description
1	02_01_066176	Chassi
2	02_02_066176	Motor Head
3	02_03_066176	Grinding head
4	02_04_066176	Grinding holder
5	02_05_066176	Circuit diagram
6	02_06_066176	Circuit diagram
7	02_07_066176	Circuit diagram

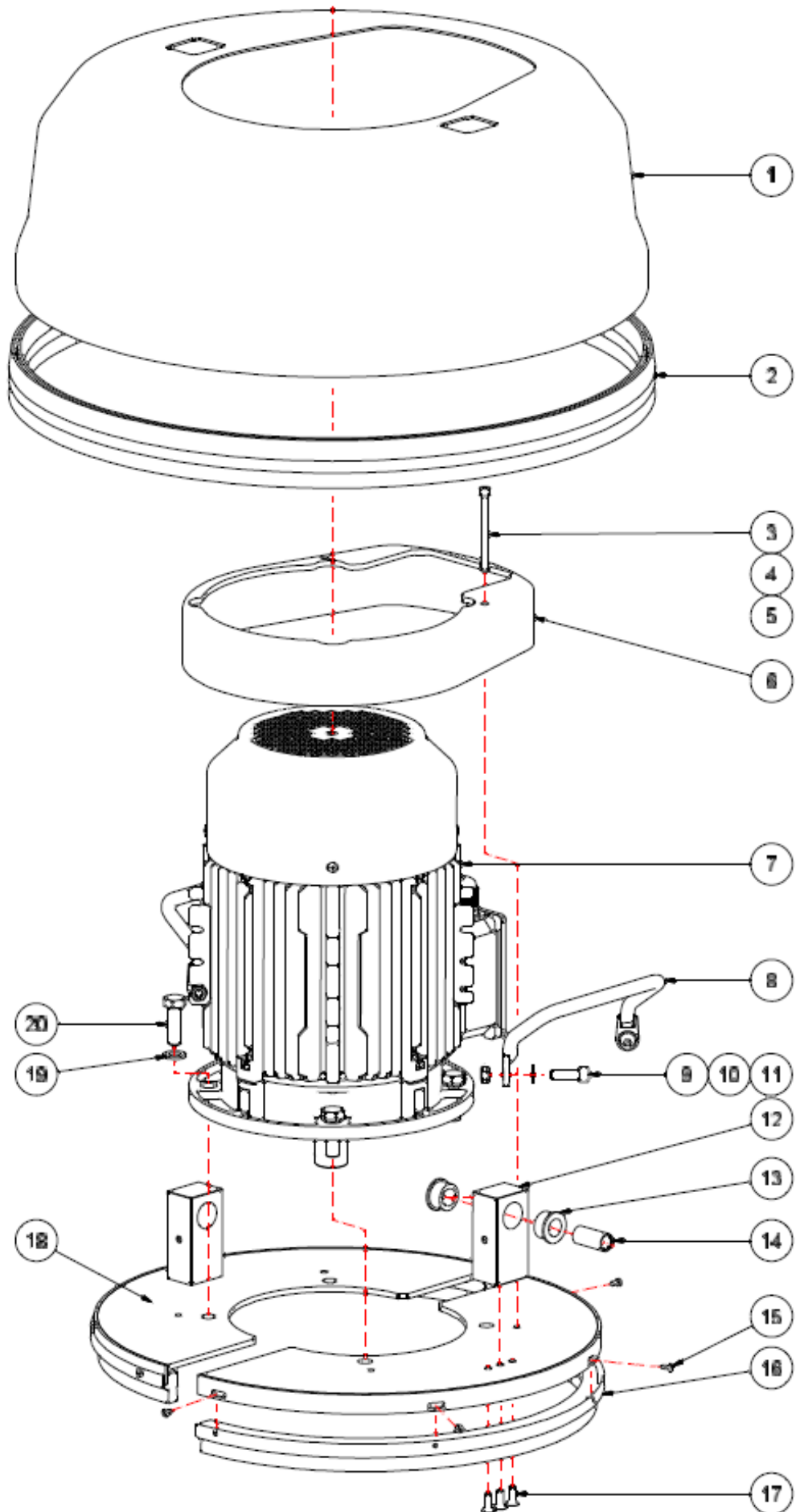
1 Chassi



1 Chassi

Item no.	Article no.	Description	Quantity
1		Chassi upper Sigma 550	1
2		Chassi bottom Sigma 550	1
3	082511	Outer tube Sigma 550	1
4	084162	Spare wheel HTC 420 grau Sigma 550	2
5		Pipe clamp Sigma 550	2
6	082509	Plastic guide bush Sigma 550	1
7		Pipe clamp Alu Sigma 550	2
8		Chassis handel Sigma 550	1
9	084163	Inner tube Sigma 550	1
10		Handle lock Sigma 550	1
11	084164	Safety washer outside axis Sigma 550	2
12		Safety pin 12x55 Sigma 550	4
13		Spring clip Sigma 550	4
14		Screw M8x60	1
15		Locknut M8	1
16		Screw M6x40	4
17		Screw M6x70	4
18	084165	Headless pin M12x25 Sigma 550	1
19		Power unit Sigma 550 3x230V	1
19		Power unit Sigma 550 3x400V	1
19		Power unit Sigma 550 3x460V	1
20		Screw M6x16	4
21		Overlay Sigma 550 "ON-OFF"	1
22		Overlay Sigma 550 "EM-STOP"	1
23	069042	Camlock connection Sigma 550	1
24	072946	Hose 51mm l=0,5m Sigma 550	1
25		Washer M6	4
26		End cap Sigma 550	2
27		Locknut M8	4
28		Washer M8	12
29		Distance sleeve Sigma 550	2
30		Adapter grinding head Sigma 550	2
31		Screw M8x70	4
32		Locknut M6	4

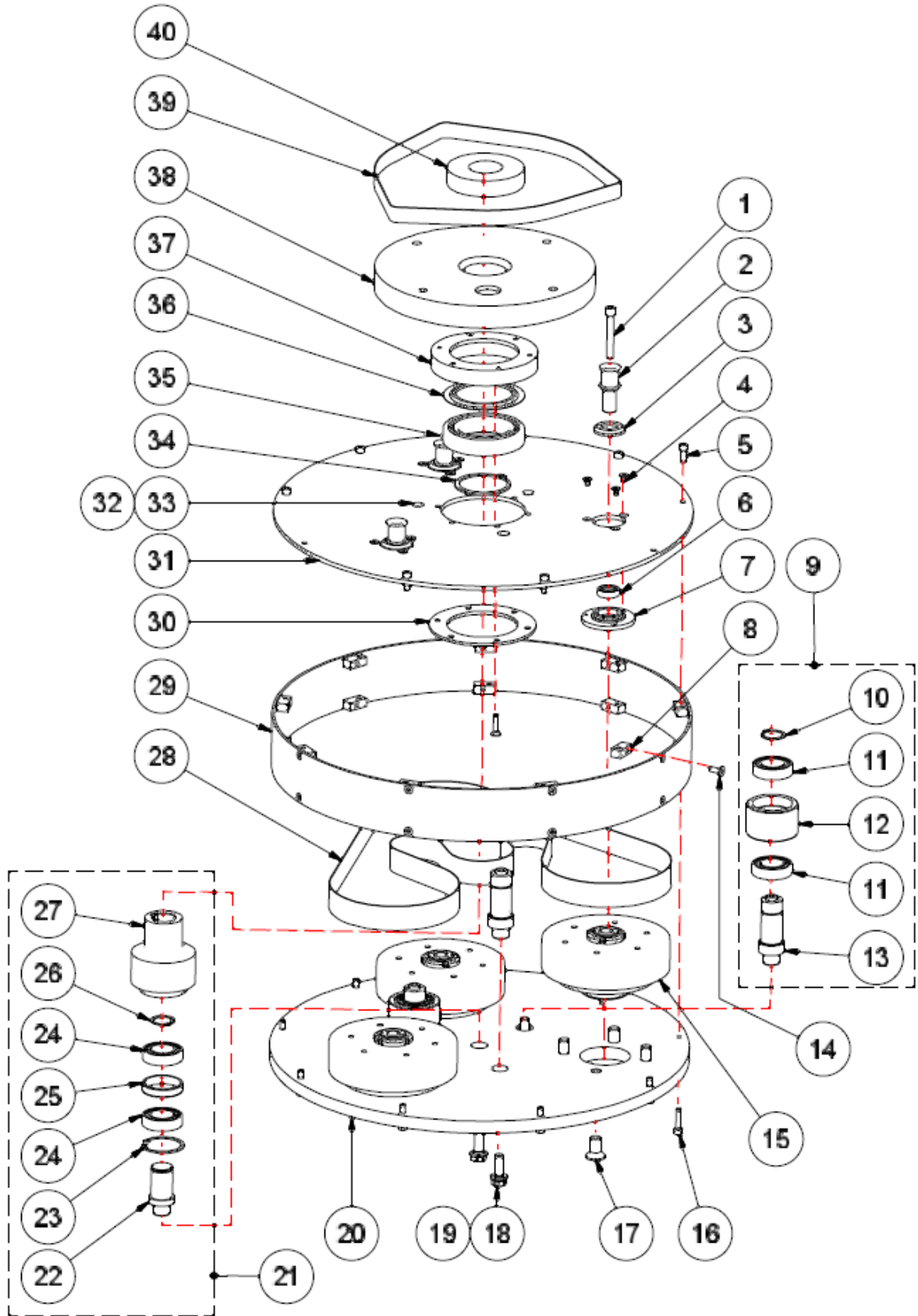
2 Motor Head



2 Motor Head

Item no.	Article no.	Description	Quantity
1	088382	Dust Cover Sigma 550	1
2	066216	Brush ring Sigma	1
3	017697	Cylinder head screw M6x10 DIN 912	2
4		Washer M6x50	2
5	068777	Counter sunk screw M6x16 FZB 8,8 SIGMA	2
6		Cover Motor below	1
7	087560	Motor 4kw 230/400V IE3 Sigma 550	1
8		Lift handel 4 kW Motor Sigma 550	2
9		Screw M8x25	4
10	014828	Washer M8 DIN 125 A	4
11	014810	Hexagon nut M 8 DIN 934 I6I/I8I	4
12	088365	Hinge holder for bushing SIGMA 550	2
13	081837	Rubber Bushing GL Sigma 550	4
14	087828	Guide bush Motor Sigma 550	2
15		Screw 3,5x13	8
16		Brush strip 2x66mm Sigma 550	1
17	068777	Counter sunk screw M6x16 FZB 8,8 SIGMA	6
18		Protection cover complete Sigma 550	2
19		Washer M12	4
20		Screw M12x35	4

3 Grinding head



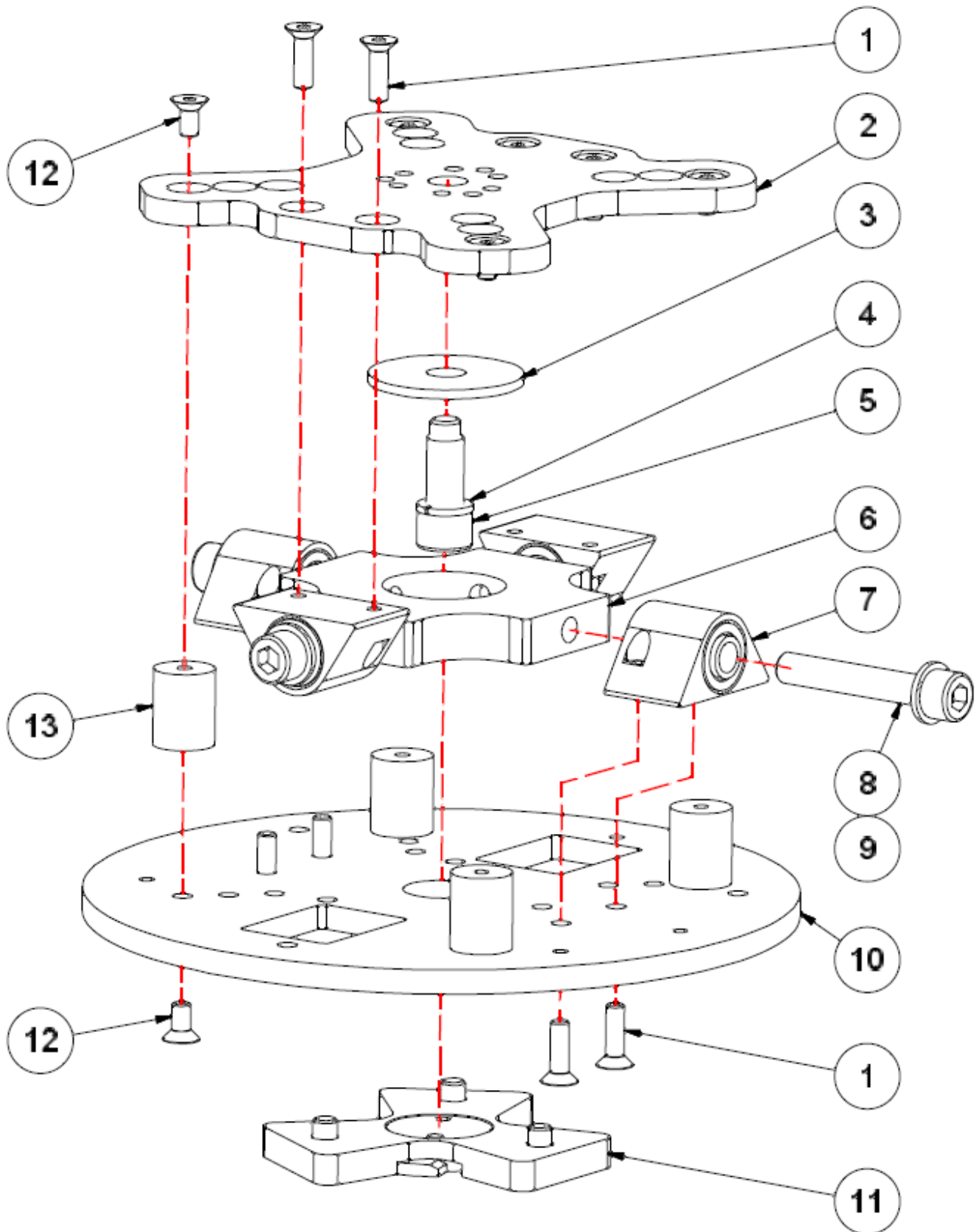
3 Grinding head

Item no.	Article no.	Description	Quantity
1	081635	Screw MC6S M8x55 12.9 Sigma550	3
2	081636	Shaft Tap Sigma550	3
3	081637	Gammaring Sigma550	3
4	081641	Screw MFTS M5x10 Sigma550	9
5		Screw M6x16	9
6	081643	Sealing Sigma550	3
7	081644	Seal cover Sigma550	3
8		Counter bushing Sigma 550	18
9		Clamping wheel complete Sigma 550	2
10	081663	Safety washer SGA25 Sigma 550	2
11	081664	Ball-bearing 6005 2RS C3 Sigma 550	4
12	081665	Press wheel Sigma 550	2
13	081666	Shaft press wheel Sigma 550	2
14	068777	Counter sunk screw M6x16 FZB 8,8 SIGMA	18
15	081667	Pulley assembly cpl. Sigma 550	3
16	081668	Screw M6x25 12.9 FZB Sigma 550	9
17	081669	Screw M12x1,25x20 10.9 Sigma 550	12
18	081670	Screw M6SH M10x25 Sigma 550	4
19	072679	Washer BRB 10,5x22x2 Sigma 550	4
20		Lower cover Sigma 550	1
21		Center pulley complete Sigma 550	1
22	087555	Shaft Center Pulley Sigma 550	1
23	087556	Circlip internal 47x1.75DIN472 Sigma 550	1
24	081664	Ball-bearing 6005 2RS C3 Sigma 550	2
25	087557	Distance Centerpulley Sigma 550	1
26	081663	Safety washer SGA25 Sigma 550	1
27	087558	Center Pulley Sigma 550 HUB	1
28	071045	Inner belt Sigma 550	1
29		Edging stripe Sigma 550	1
30		Cover center Sigma 550	1
31		Upper lid Sigma 550	1
32		Screw M8x20	3
33		Washer M8	3
34		Circlip SGA 60 Sigman 550	1

3 Grinding head

Item no.	Article no.	Description	Quantity
35	081638	Ball bearing 6204 2RS Sigma550	1
36	081640	Nilos ring Sigma550	1
37	081639	Housing centre Sigma550	1
38		Engine plate Sigma 550	1
39	069874	Belt up Sigma 550	1
40		Foam Ring Sigma 550	1

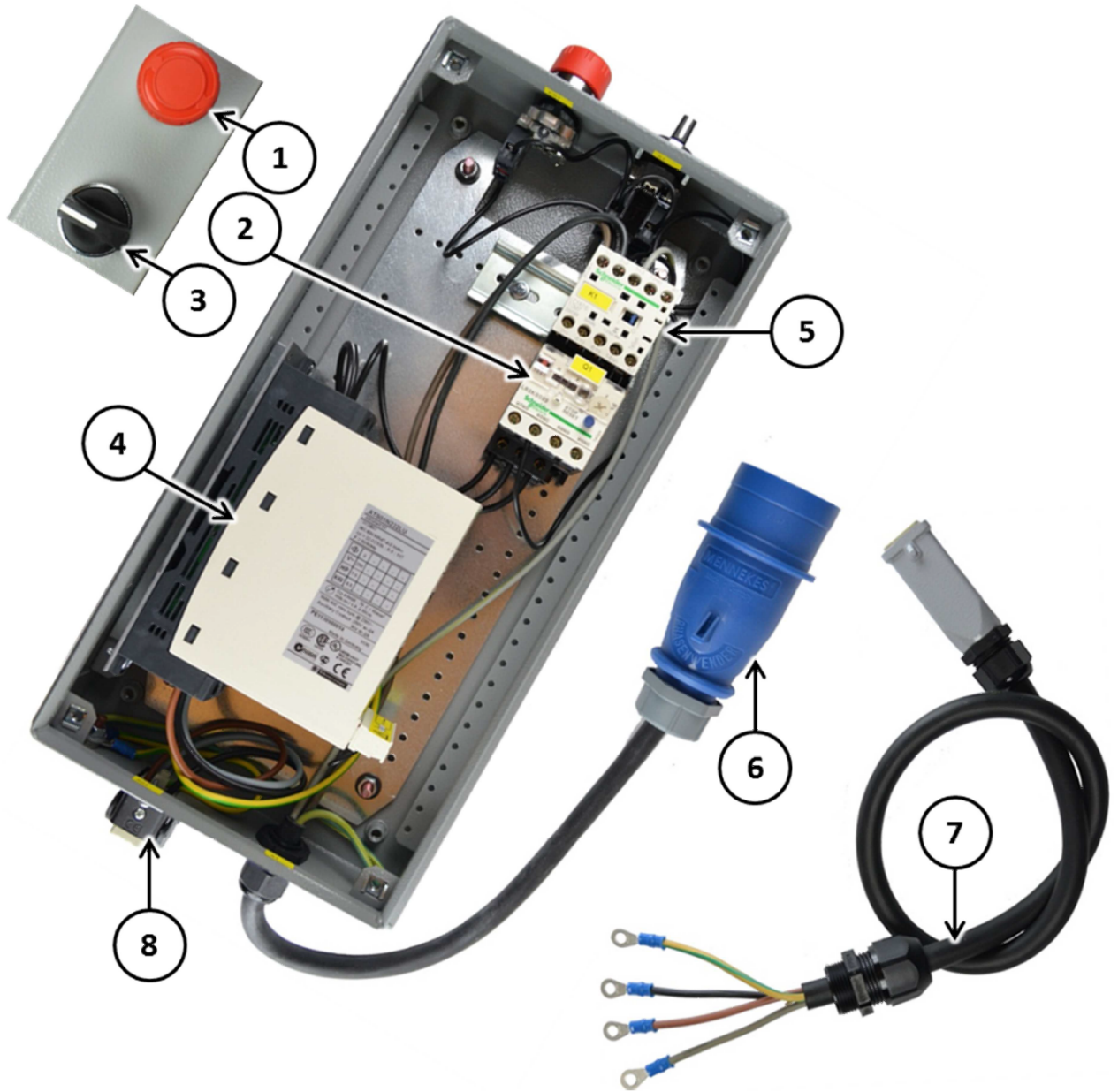
4 Grinding holder



4 Grinding holder

Item no.	Article no.	Description	Quantity
1		Screw M6x20	8
2	080513	Upper Grind Holder Plate Sigma Triple D	1
3	080512	Washer Sigma Triple Disc	1
4	080509	Washer M10 FZB Sigma 550	1
5	080508	Screw M10x30 10.9 FZB Sigma 550	1
6	080511	Cardan connection Sigma 550	1
7	072633	Ear Wide complete SIGMA 550	4
8	072680	Screw MC6S M10x60 12,9 f. SIGMA	4
9	072679	Washer BRB 10,5x22x2 Sigma 550	4
10	080510	Grind Holder Plate Sigma Triple D	1
11	073110	Cross complete SIGMA 550	1
12	072632	Screw MFTS M6x12 10,9 FZB SIGMA	8
13	072614	Shock absorder 20x25 M6 Sigma 550	4

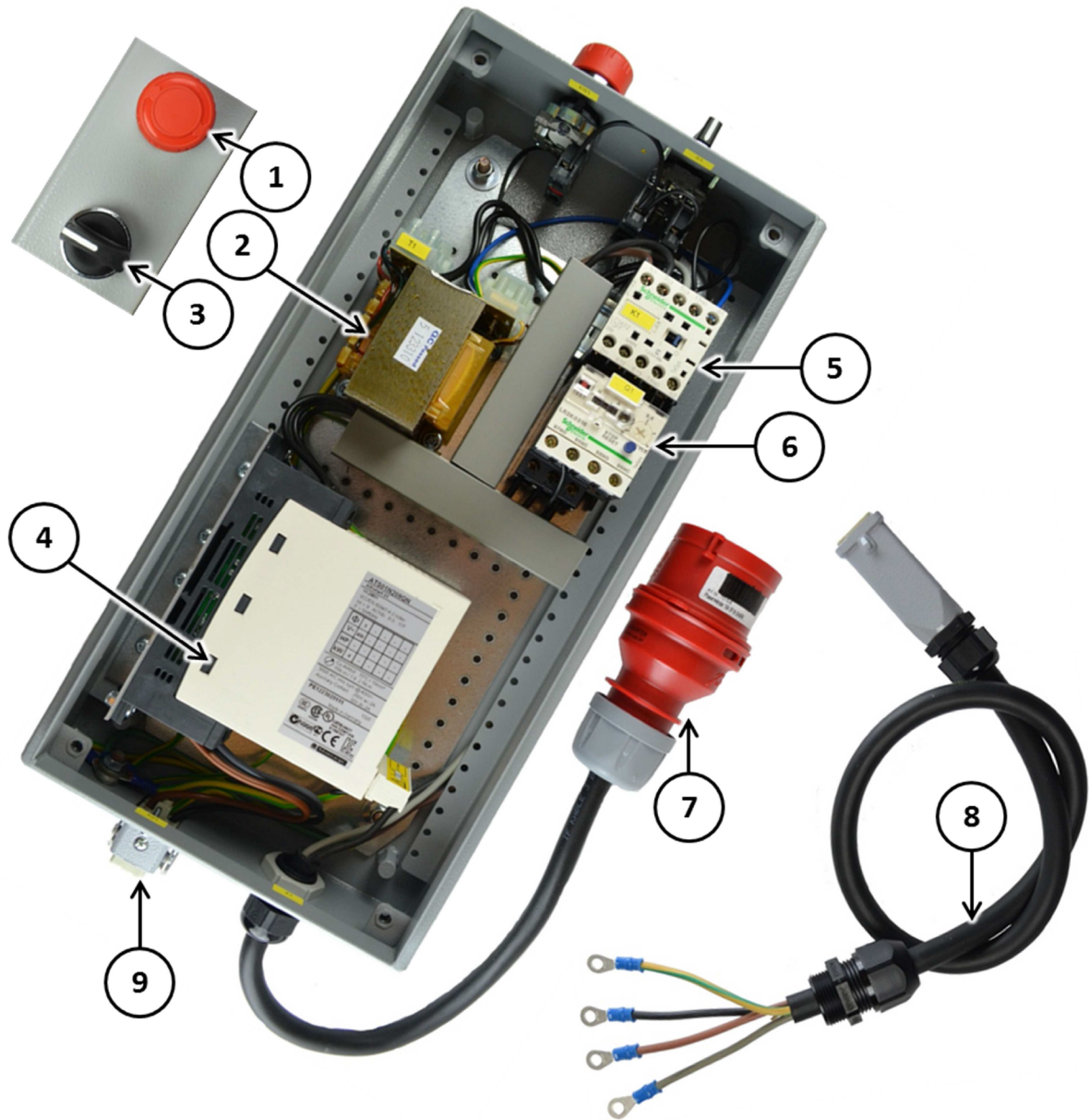
5 Circuit diagram



5 Circuit diagram

Item no.	Article no.	Description
		Mounting base
		Contact Block NC
		Mounting base
		Contact block NO
		Contact block NC
1		Emergency stop Sigma 550
2		Relay Overcurrent 12A-16A / Q1
3		Controller black 3 poles / S1
4		Soft start 4KW 240V / U1
5		Contact transmitter / K1
6		Plug 16A 5P blue phase changer / X1
7	069510	motor cable w.plug Sigma 550
8	069509	connection socket w.cable Sigma 550

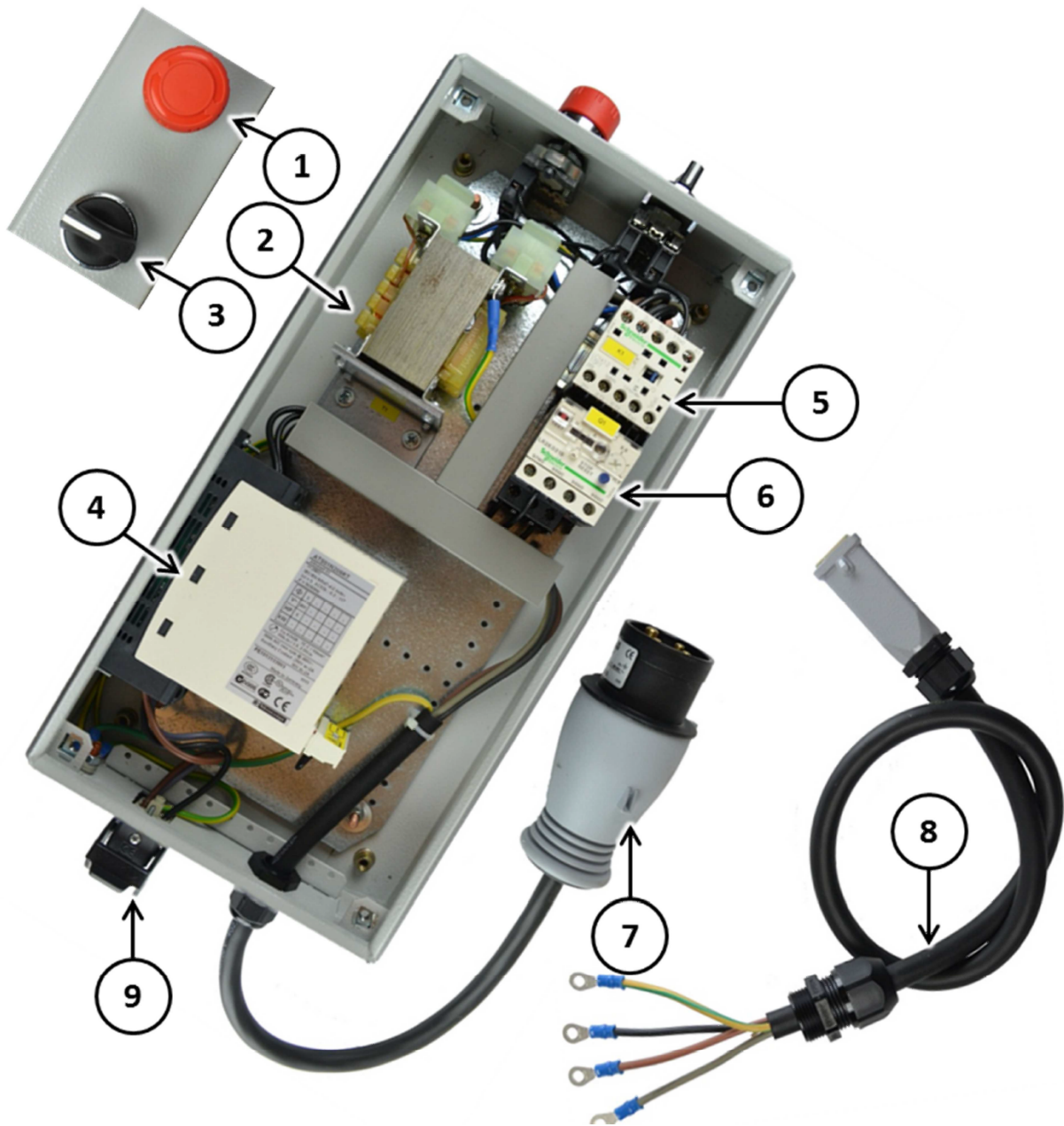
6 Circuit diagram



6 Circuit diagram

Item no.	Article no.	Description	Quantity
		Mounting base	1
		Contact Block NC	1
		Fuse 0.2A 5x20	2
		Mounting base	1
		Contact block NO	1
		Contact block NC	1
1		Emergency stop Sigma 550	1
2		Transformer / T1	1
3		Controller black 3 poles / S1	1
4		Soft start 4KW 400V / U1	1
5		Contact transmitter / K1	1
6		Relay Overcurrent 8A-11.5A / Q1	1
7		Plug 16A 5 pol.red Phase inverter / X1	1
8	069510	motor cable w.plug Sigma 550	1
9	069509	connection socket w.cable Sigma 550	1

7 Circuit diagram



7 Circuit diagram

Item no.	Description	Quantity
	Mounting base	1
	Contact Block NC	1
	Fuse 0.2A 5x20	2
	Mounting base metal	1
	Contact block NO	1
	Contact block NC	1
1	Emergency stop Sigma 550	1
2	Transformer / T1	1
3	Controller black 3 poles / S1	1
4	Soft start 4KW 460V / U1	1
5	Contact transmitter / K1	1
6	Relay Overcurrent 8A-11.5A / Q1	1
7	Plug 16A 4 pol.black Phase inverter / X1	1
8	Motor Cable GL 3-phase CMPL / W2	1
9	Motor Cable GL 3-phase COMPL / X01	1